



S.R. 535 PD&E Study

U.S. 192 to north of World Center Drive (S.R. 536)

Orange and Osceola Counties

Financial Project Identification (FPID) Number: 437174-2



Project Description

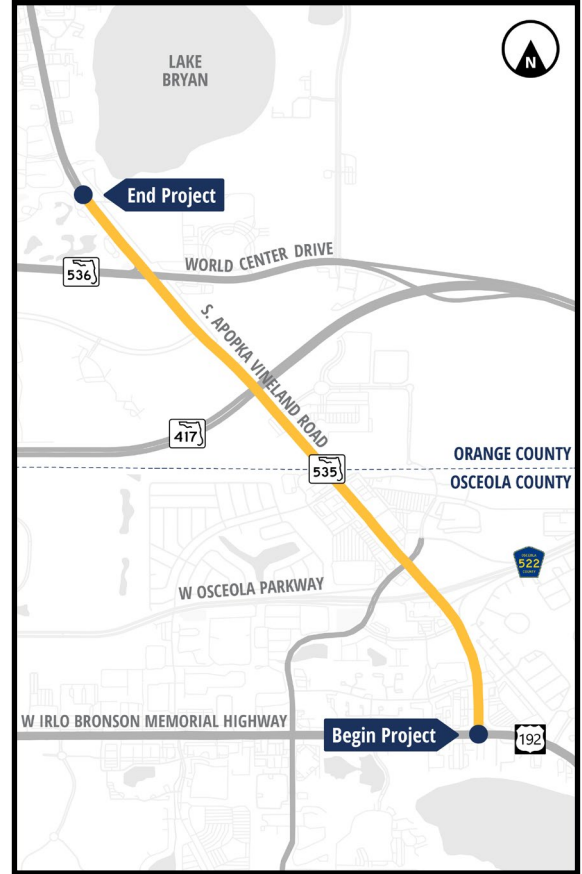
The Florida Department of Transportation (FDOT) is conducting a Project Development and Environment (PD&E) Study to evaluate improvements to State Road (S.R.) 535 (S. Apopka Vineland Road) from U.S. 192 (W. Irlo Bronson Memorial Highway) to north of World Center (S.R. 536), a project length of approximately 2.35 miles within Orange and Osceola counties.

The purpose of this study is to develop and evaluate improvements to S.R. 535 in order to accommodate future traffic demand and enhance safety. Some of the features evaluated with the various alternatives include:

- Inside widening
- Outside widening
- Shared use paths
- Stormwater treatment
- Intersection improvements

The PD&E Study will determine the location and conceptual design of the preferred roadway improvements and the associated social, economic, and environmental effects of the improvements.

The alternatives and the analysis results are being shared with the community through individual stakeholder meetings, a public information meeting, and a public hearing.



We are here →



Contact Information:

David Graeber, P.E.
 FDOT Project Manager
 386-943-5392
 David.Graeber@dot.state.fl.us

CFLRoads.com

Project Status & Estimated Costs*

PD&E Study:	Ongoing; completion in 2024	\$ 2.4 million
Design:	Funded; Fiscal Year 2026	\$ 5.2 million
Right of Way:	Unfunded	\$ 38.1 million
Construction:	Unfunded	\$ 76.5 million

***subject to change**

Public participation is solicited without regard to race, color, national origin, age, sex, religion, disability, or family status. Persons wishing to express their concerns relative to FDOT compliance with Title VI may do so by contacting Melissa McKinney, FDOT District Five Title VI Coordinator, at Melissa.McKinney@dot.state.fl.us.

Alternatives Evaluated

No Build Alternative

The no build alternative keeps the existing conditions and includes planned projects in the study area.

Build Alternative

The build alternative includes roadway widening and intersection improvements. Based on the evaluation and feedback from the community, FDOT is recommending the build alternative as the preferred alternative.

Roadway Widening



- » Three 11-foot travel lanes in each direction
- » A median width that varies from 32 feet to 47 feet
- » Shared use paths on both sides
- » Typical section is anticipated to fit within existing right of way

Intersection Improvements



Key intersection improvements include the following:

- 1 **Poinciana Boulevard** — Eastbound Triple Left Signal intersection
- 2 **Polynesian Isle Boulevard** — Partial Median U-Turn intersection to displace north south left turns
- 3 **International Drive** — East Partial Displaced Left Turn intersection
- 4 **World Center Drive** — North and South Partial Displaced Left Turn intersection