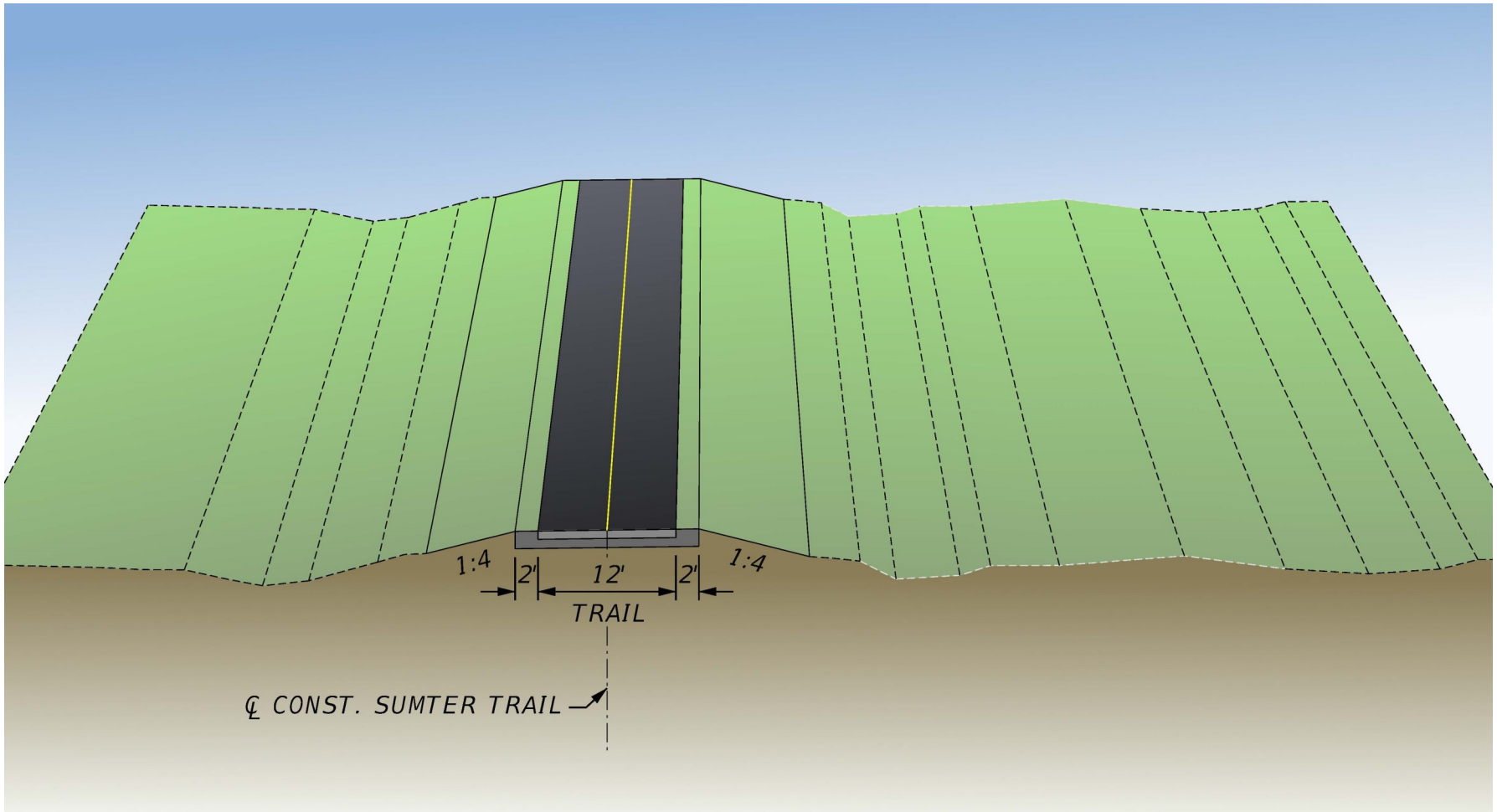




Project Location Map

South Sumter Connector Trail Project Development and Environment (PD&E) Study
 Financial Project ID: 435471-1 Alternatives Public Meeting October 23, 2018

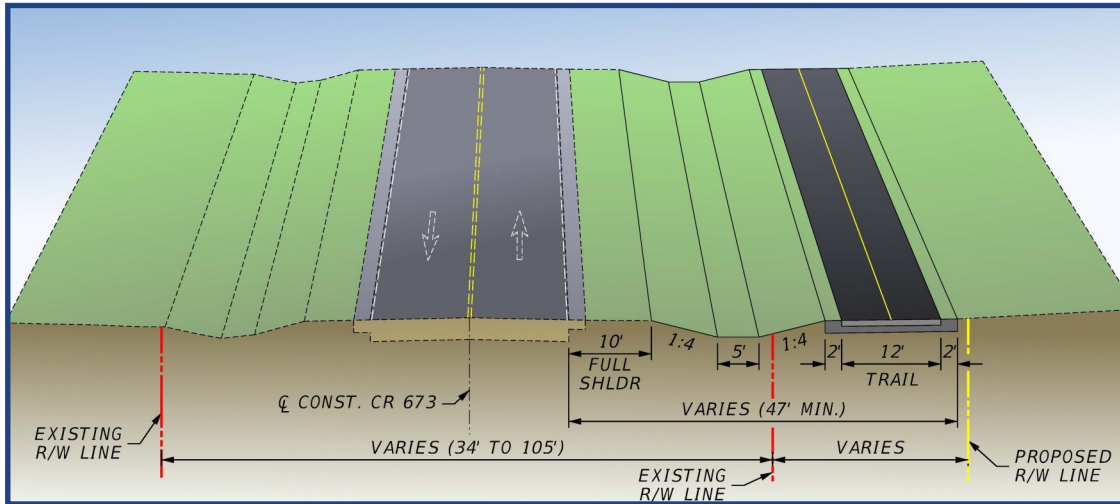


Typical Section—Withlacoochee State Forest

South Sumter Connector Trail Project Development and Environment (PD&E) Study

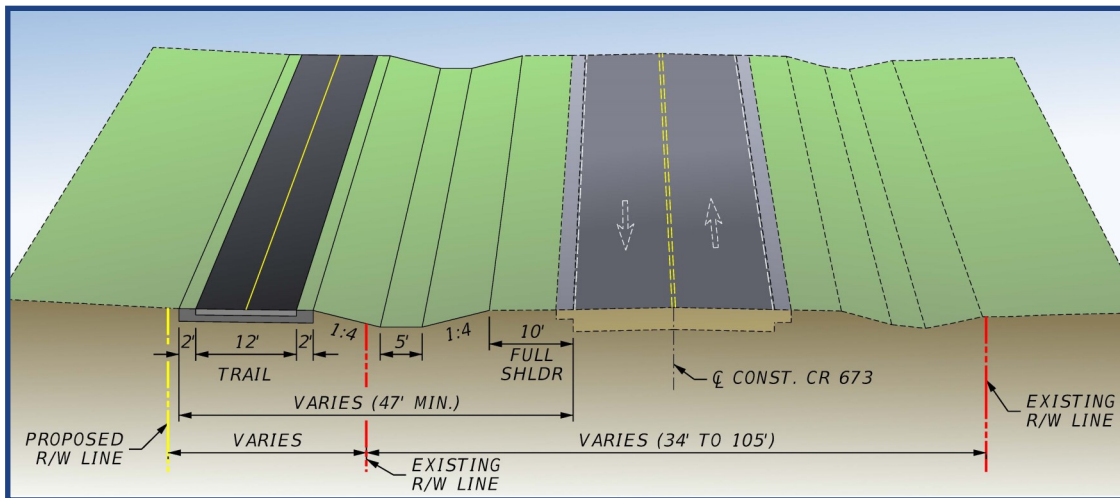
Financial Project ID: 435471-1

Alternatives Public Meeting October 23, 2018



Right Side of the Road

Impacts 11.51 acres
along 38 parcels



Left Side of the Road

Impacts 11.66 acres
along 16 parcels

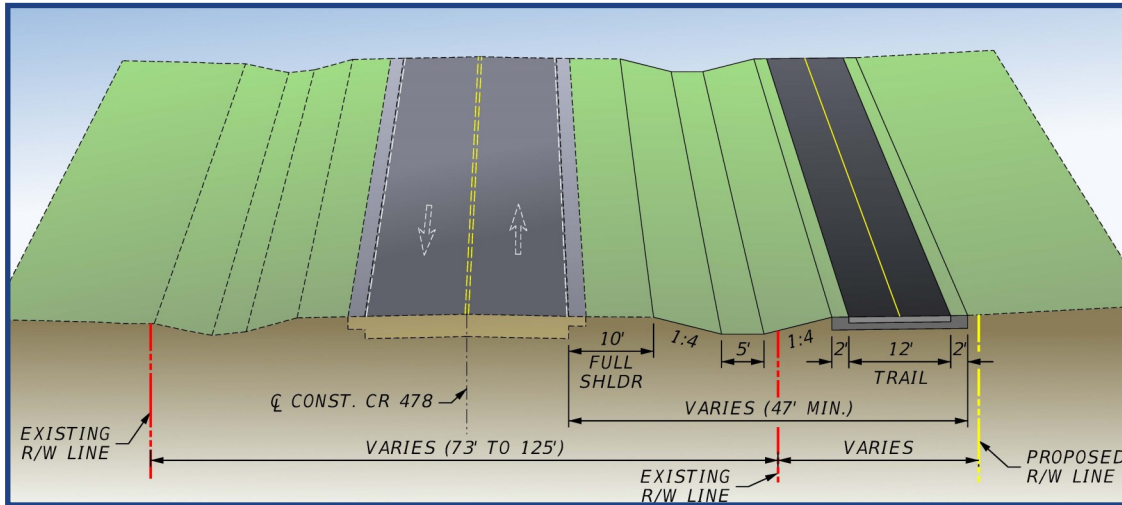


Typical Section - CR 673 Rural Section

South Sumter Connector Trail Project Development and Environment (PD&E) Study

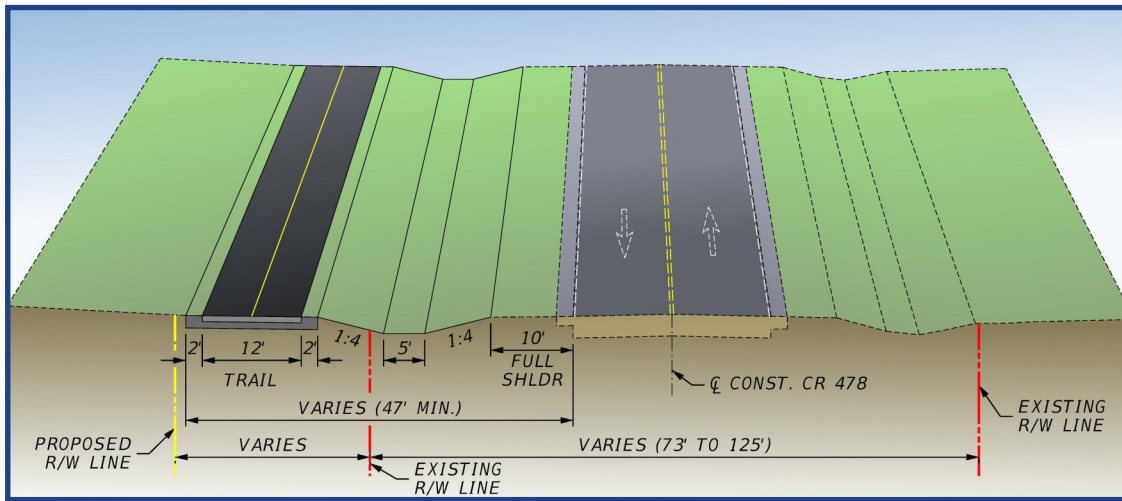
Financial Project ID: 435471-1

Alternatives Public Meeting October 23, 2018



Right Side of the Road

Impacts 10.73 acres
along 61 parcels



Left Side of the Road

Impacts 9.96 acres
along 65 parcels

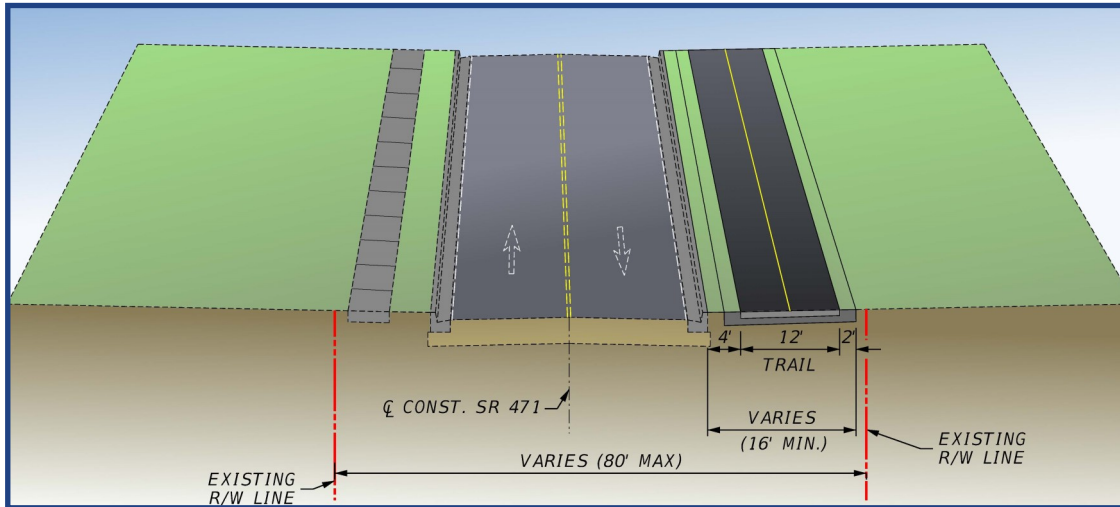


Typical Section - CR 478 Rural Section

South Sumter Connector Trail Project Development and Environment (PD&E) Study

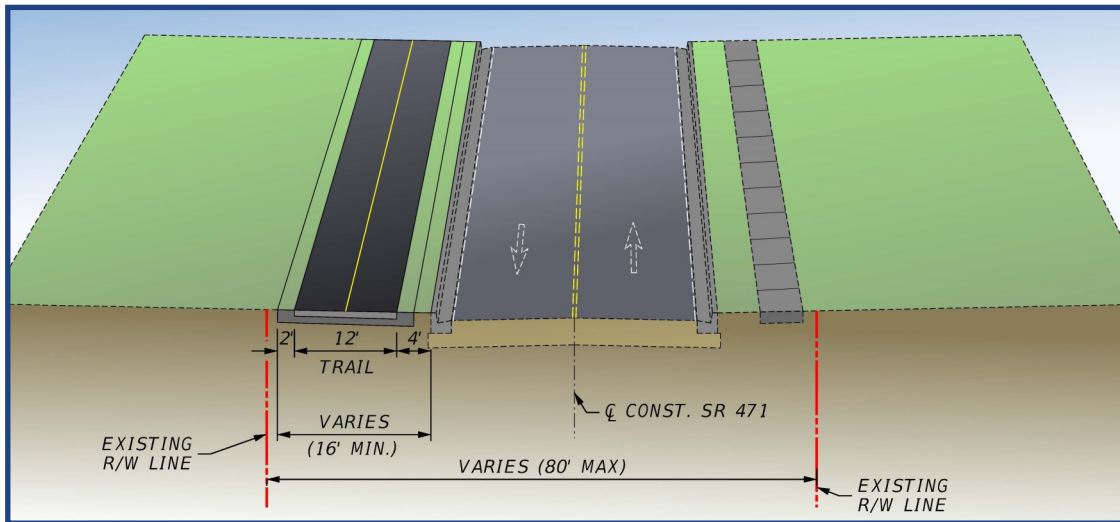
Financial Project ID: 435471-1

Alternatives Public Meeting October 23, 2018



Right Side of the Road

**Impacts 0 acres
along 0 parcels**



Left Side of the Road

**Impacts 0 acres
along 0 parcels**

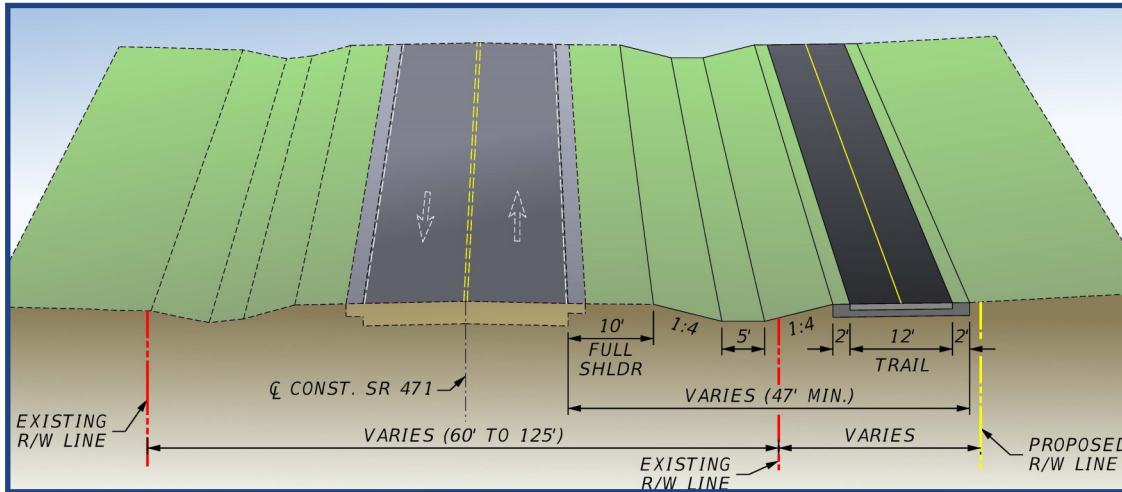


Typical Section - SR 471 Urban Section

South Sumter Connector Trail Project Development and Environment (PD&E) Study

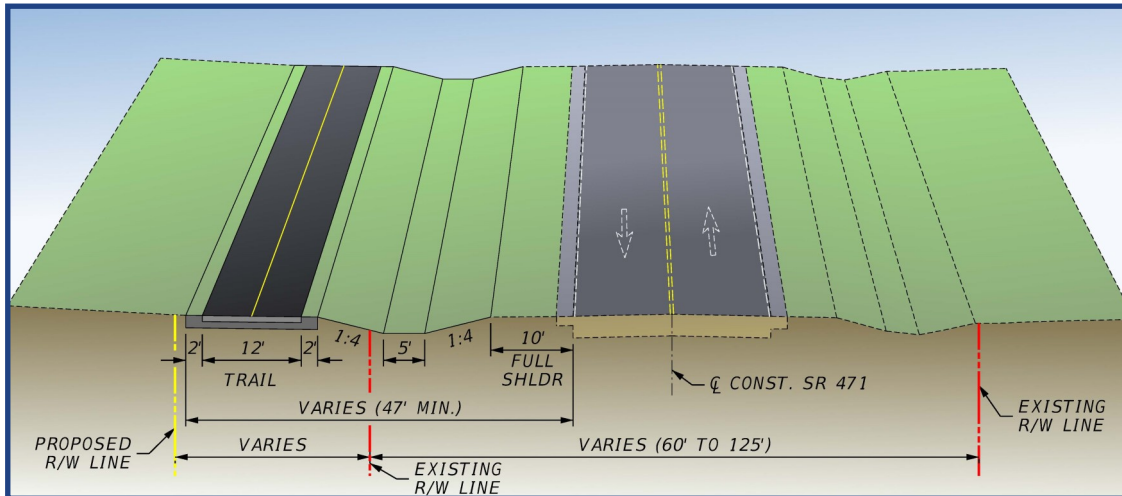
Financial Project ID: 435471-1

Alternatives Public Meeting October 23, 2018



Right Side of the Road

Impacts 4.73 acres
along 36 parcels



Left Side of the Road

Impacts 8.48 acres
along 40 parcels

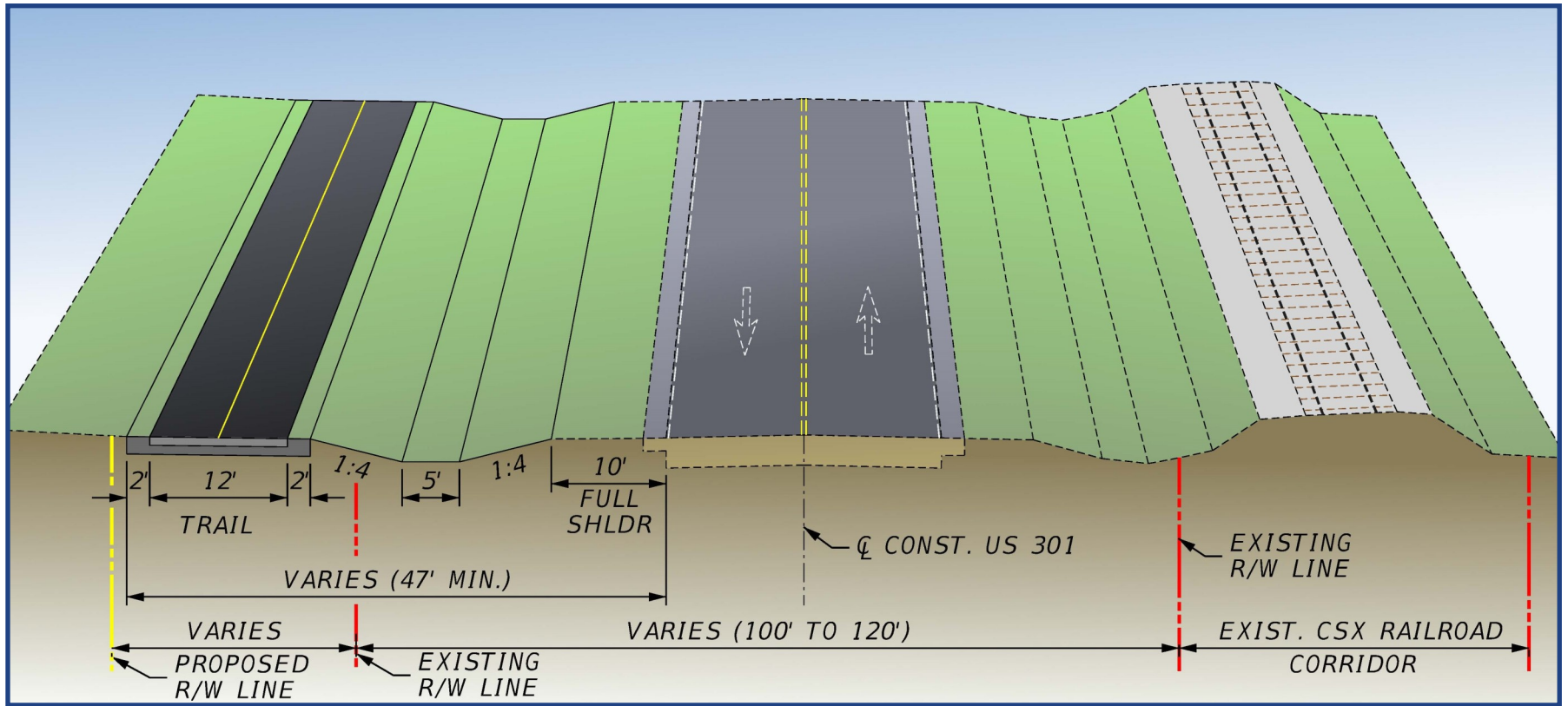


Typical Section - SR 471 Rural Section

South Sumter Connector Trail Project Development and Environment (PD&E) Study

Financial Project ID: 435471-1

Alternatives Public Meeting October 23, 2018



**Left Side of the Road
Impacts 1.49 acres along 10 parcels**

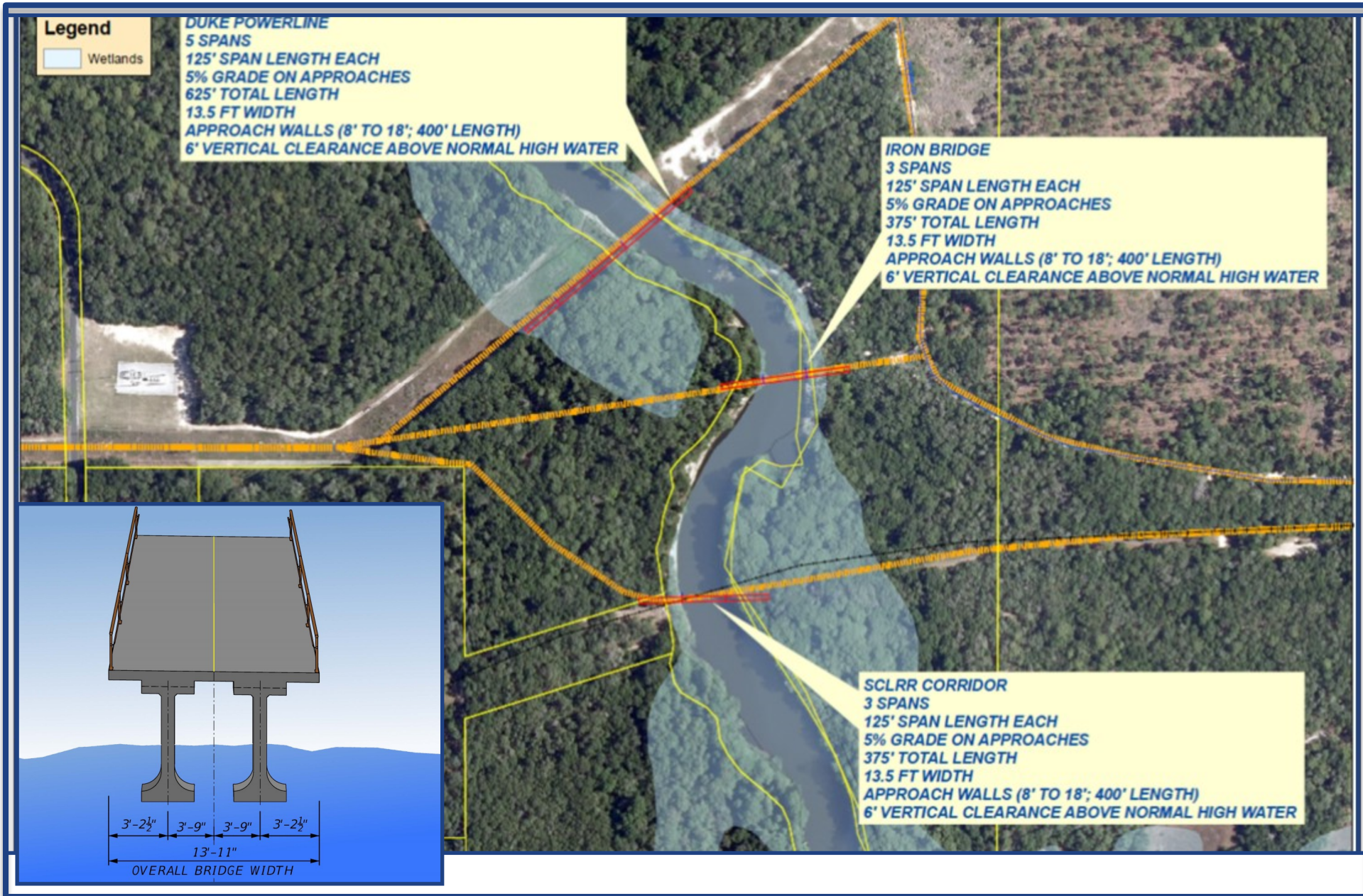


Typical Section - US 301 Rural Section

South Sumter Connector Trail Project Development and Environment (PD&E) Study

Financial Project ID: 435471-1

Alternatives Public Meeting October 23, 2018

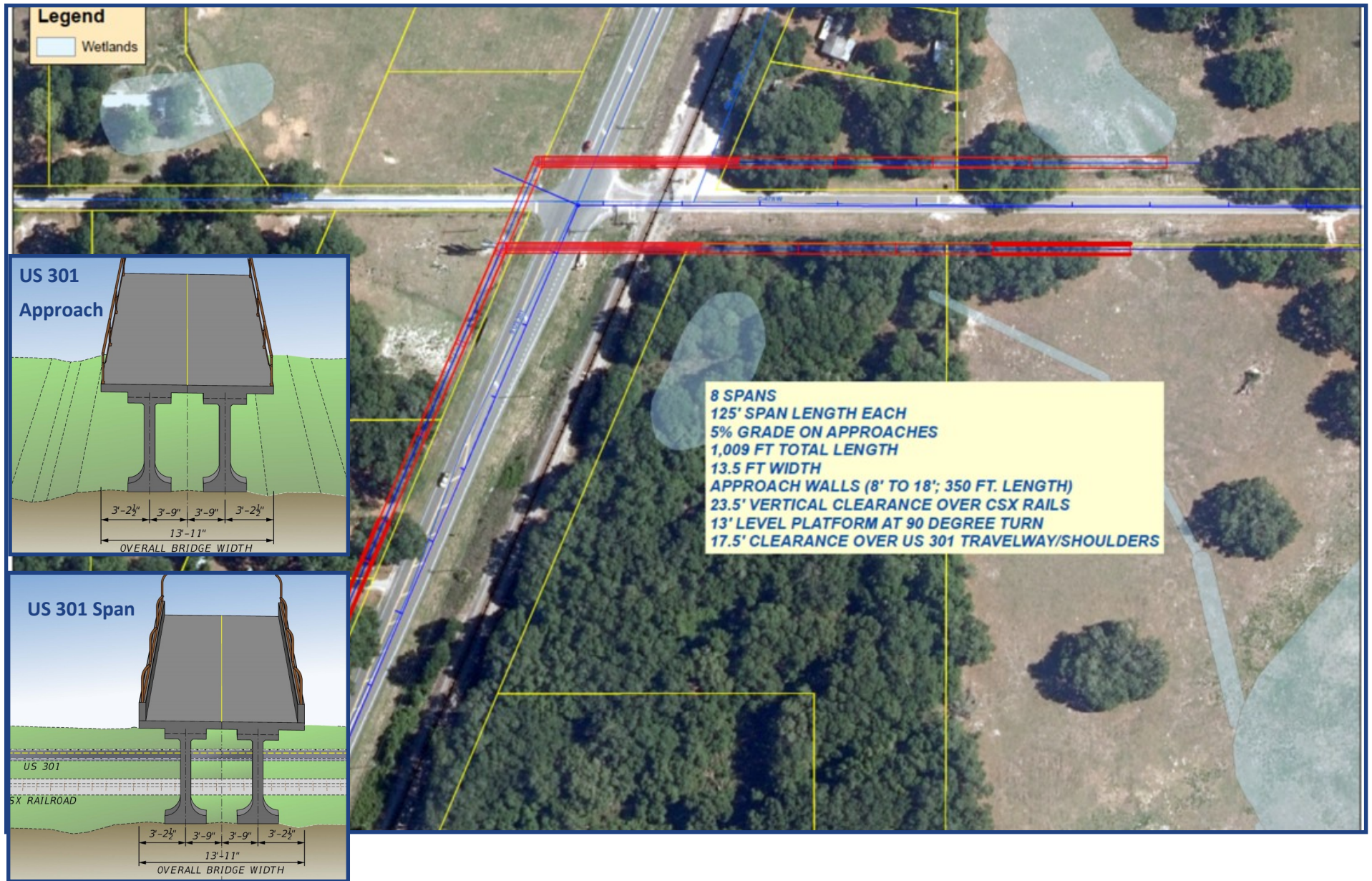


Alternatives Locations for Bridge Crossing the Withlacoochee River

South Sumter Connector Trail Project Development and Environment (PD&E) Study

Financial Project ID: 435471-1

Alternatives Public Meeting October 23, 2018



Pedestrian Bridge Crossings at US 301

South Sumter Connector Trail Project Development and Environment (PD&E) Study
 Financial Project ID: 435471-1 Alternatives Public Meeting October 23, 2018

Evaluation Criteria DRAFT	No-Build	CR 673 CR 683D to US 301		US 301	CR 478		SR 471		Withlacoochee State Forest Alignment
		Left Align	Right Align	CR 673 to CR 478 Left Align	US 301 to SR 471 Left Align	Right Align	SR 50 to CR 478 Left Align	Right Align	
Social Impacts									
Number of Parcels Impacted	0	16	38	10	65	61	40	36	20
Anticipated R/W Acquisition (acres)	0	11.66	11.51	1.49	9.96	10.73	8.48	4.73	14.99
Connections to Parks, Schools, Other (L/M/H)	0	L	L	L	M	M	H	H	H
Potential Natural/Cultural Environmental Effects									
Archaeological Sites (number)	0	0	0	0	0	0	0	0	1
Historical Sites (number)	0	0	1	1	1	2	1	1	2
Section 4(f) Sites (number)	0	0	0	0	0	0	0	0	
Wetlands (acres)	0	0	0	0	0.003	0.17	2.62	1.67	
Floodplains (L/M/H)	0	L	M	L	L	M	L	M	
Wildlife/T&E Species Occurrence Potential	0	L	L	L	L	L	L	L	
Trees Removal Required (est.)	0	40	168	11	89	65	71	80	
Local and Regional Support									
Supported by Local Governments (L/M/H)	0	M	M	H	M	M	H	H	
Comprehensive Plan Consistency (L/M/H)	0	H	H	H	H	H	H	H	
Potential Physical Effects									
Number of Utility Relocations	0	L	M	L	M	L	L	M	
Number of Contamination Sites *	0	4	3	1	2	4	11	10	
Number of Drainage Facility Impacts/Required Modifications	0	2 / 4	1 / 4	0 / 1	34 / 10	45 / 10	0 / 7	0 / 6	
Safety									
Number of Driveway Crossings	0	7	24	4	45	43	30	23	N/A
Number of Street Crossings	0	1	0	1	10	6	10	10	N/A
Estimated Project Costs (2018 USD)									
Construction	\$0								
Design & CEI (40% of Construction Cost)	\$0								
Right of Way Acquisition	\$0	\$1,055,000	\$2,280,000	\$600,000	\$3,900,000	\$3,867,500	\$2,980,000	\$2,160,000	\$1,477,500
Wetland Mitigation	\$0								
Species Mitigation/Relocation	\$0								
<i>Estimated Total Costs</i>	\$0								



Evaluation Matrix

South Sumter Connector Trail Project Development and Environment (PD&E) Study
 Financial Project ID: 435471-1 Alternatives Public Meeting October 23, 2018

PROJECT SCHEDULE

PROJECT MILESTONES	2017			2018			2019			
	Apr May Jun	Jul Aug Sep	Oct Nov Dec	Jan Feb Mar	Apr May Jun	Jul Aug Sep	Oct Nov Dec	Jan Feb Mar	Apr May Jun	Jul Aug Sep
Begin Study	★									
Public Involvement	[Bar]									
Data Collection	[Bar]									
Engineering and Environmental Analysis		[Bar]								
Alternatives Public Information Meeting							★			
Draft Documentation							[Bar]			
Final Documentation									[Bar]	
Approved – Study Completed										★

Schedule is subject to change



Project Schedule

South Sumter Connector Trail Project Development and Environment (PD&E) Study

Financial Project ID: 435471-1

Alternatives Public Meeting October 23, 2018