

# Proposed Typical Section: East of Waters Edge Drive to East of Professional Drive



## U.S. 441 Improvements From Mills Street to College Drive

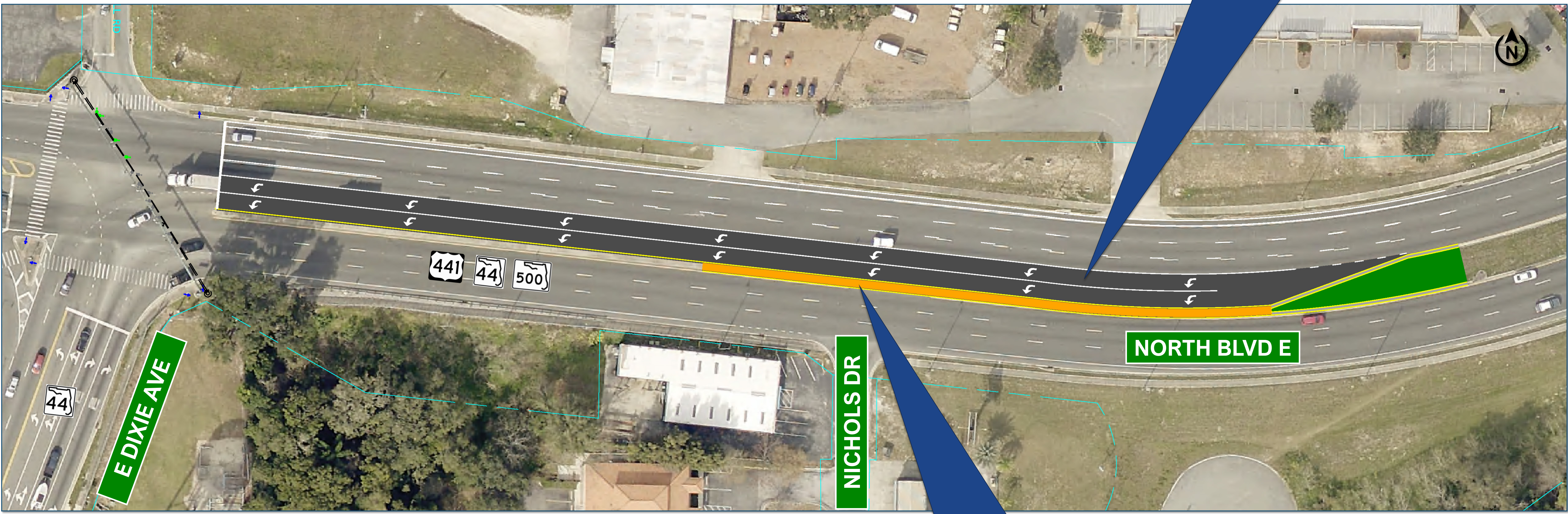
Financial Project Identification (FPID) No.: 448735-1





# Proposed Improvement: U.S. 441 at S.R. 44 (East Dixie Avenue)

**Extended Dual  
Left Turn Lanes**



**Median  
Closed**

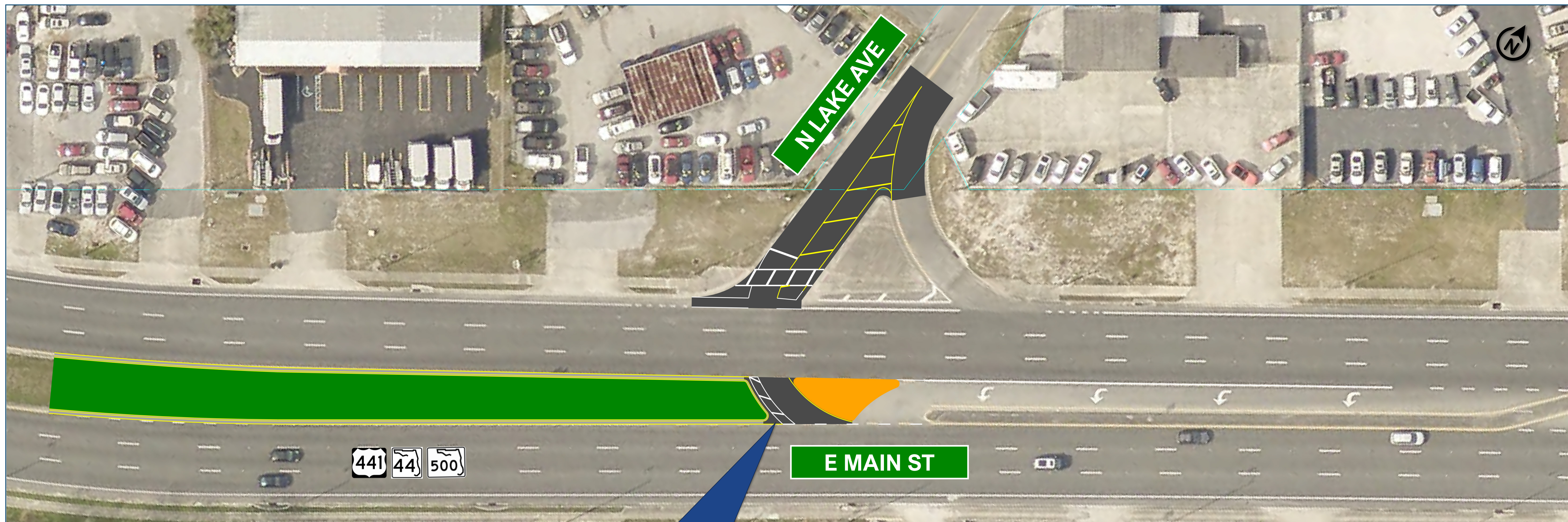
**U.S. 441 Improvements  
From Mills Street to College Drive**

Financial Project Identification (FPID) No.: 448735-1





# Proposed Improvement: U.S. 441 at North Lake Avenue



**Median  
Modification**

**U.S. 441 Improvements  
From Mills Street to College Drive**

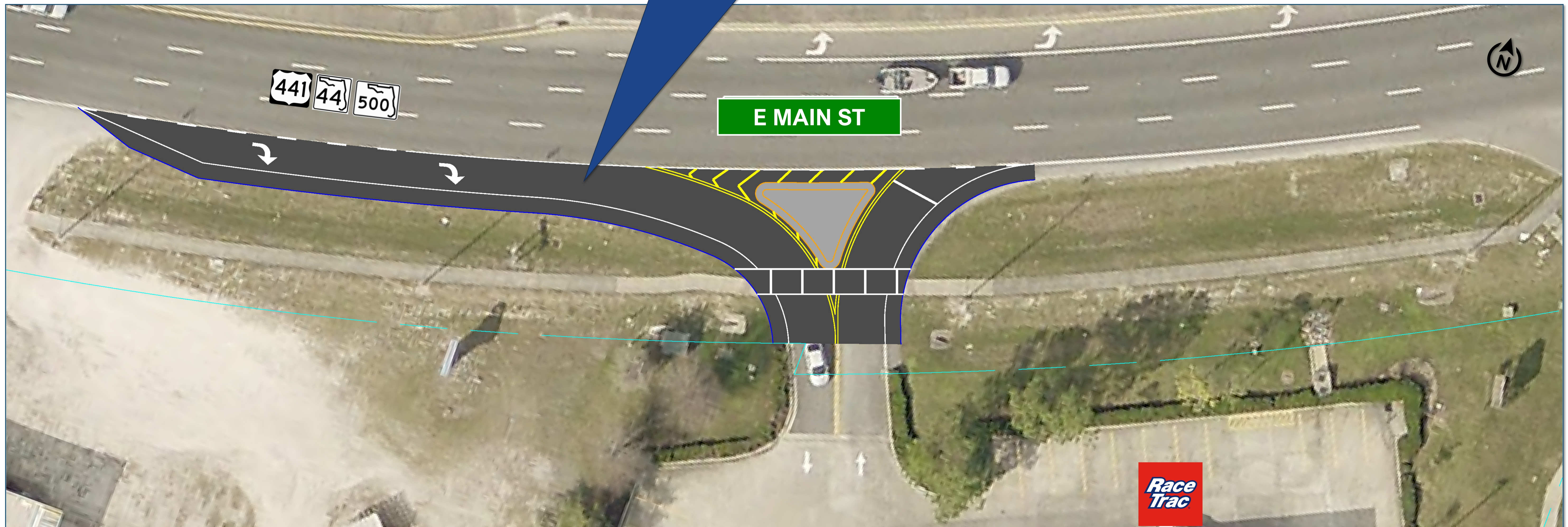
Financial Project Identification (FPID) No.: 448735-1





# Proposed Improvement: U.S. 441 at RaceTrac Service Station

**Extended Right  
Turn Lane**



## U.S. 441 Improvements From Mills Street to College Drive

Financial Project Identification (FPID) No.: 448735-1

