



# Silver Star Road (S.R. 438) Pedestrian Safety Improvements

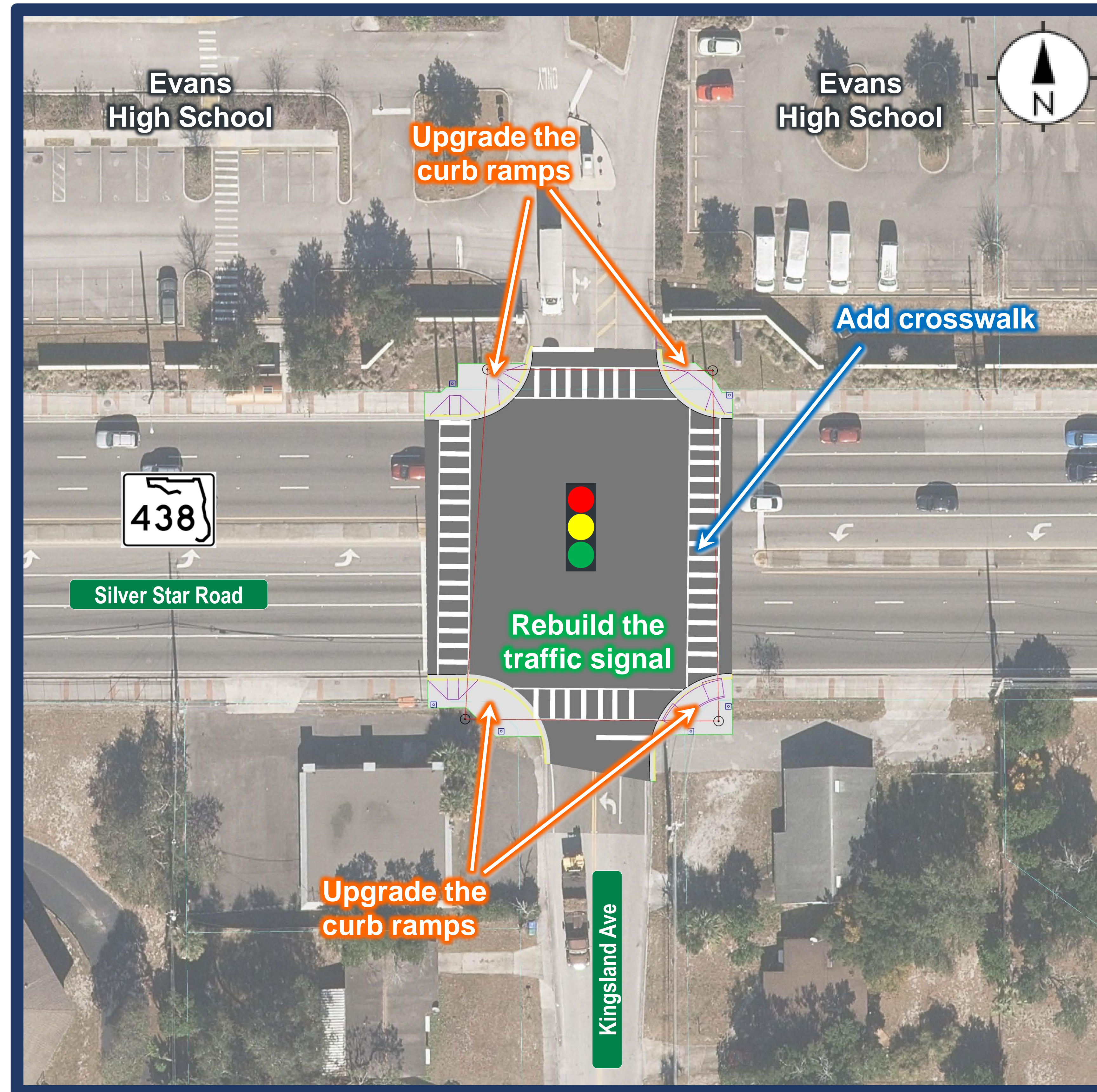
FPID: 445696-1 & 445696-2

## SR 438 CORRIDOR



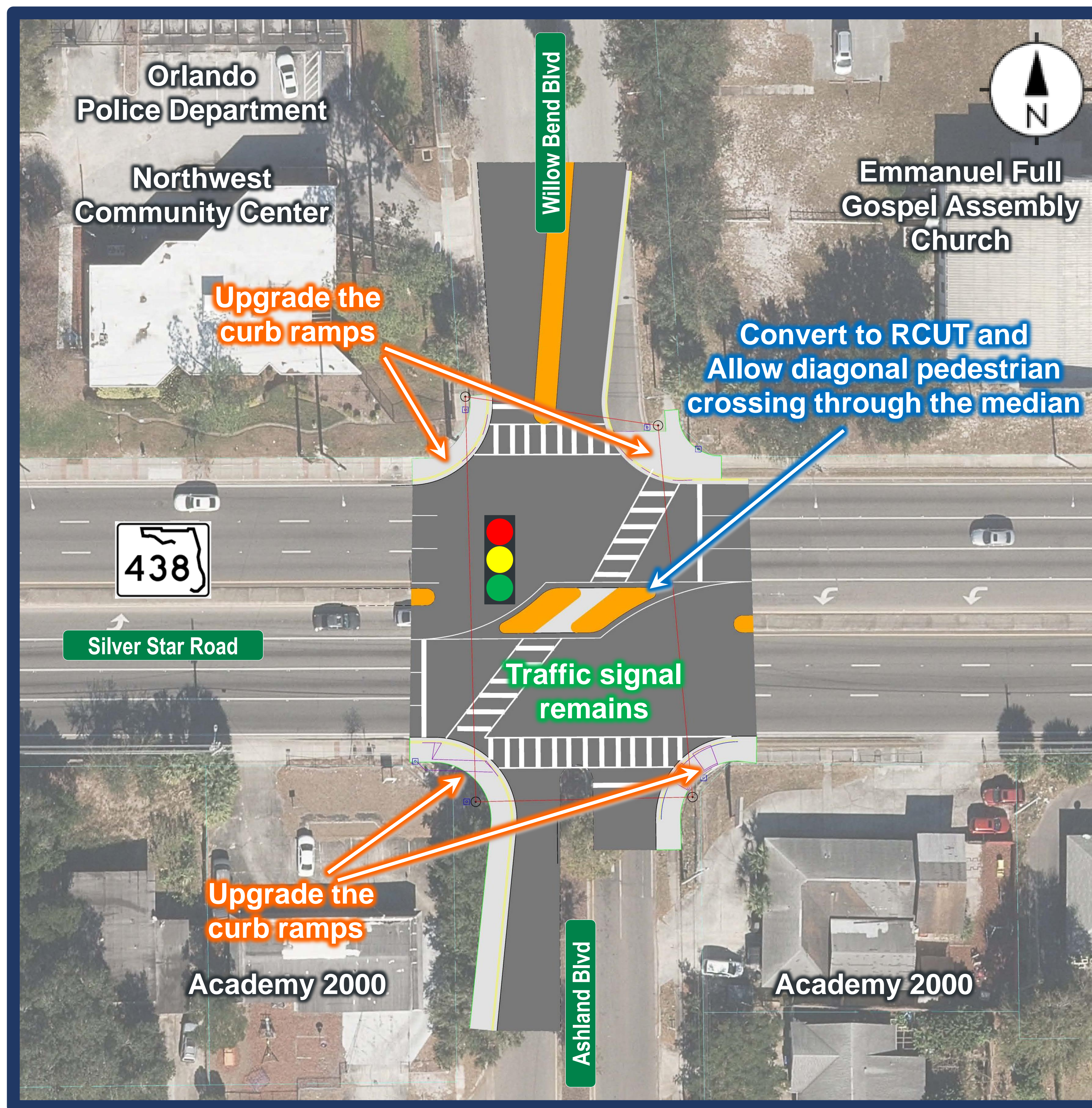


## Proposed Improvements Kingsland Avenue



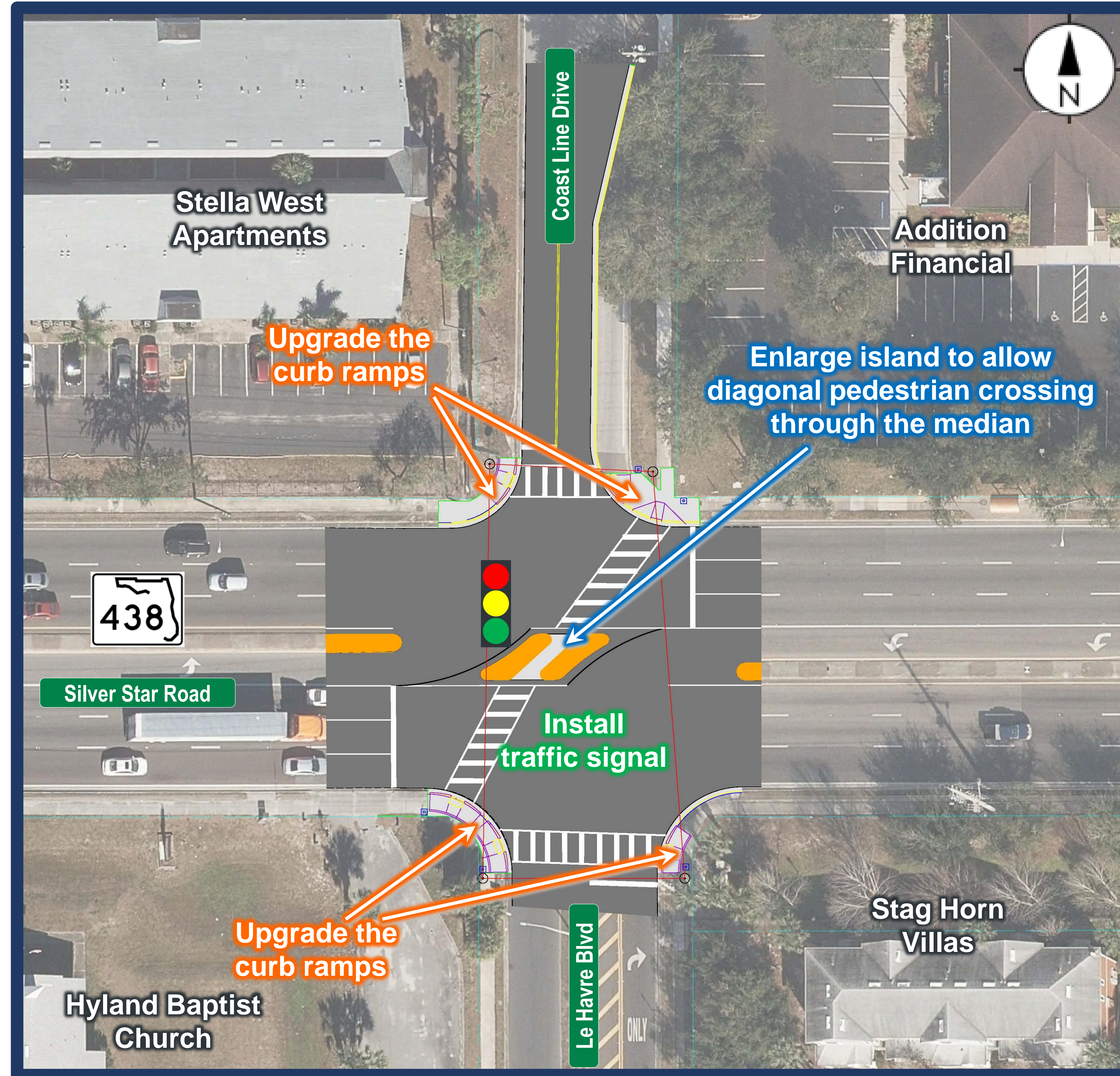


## Proposed Improvements Ashland Boulevard / Willow Bend Boulevard



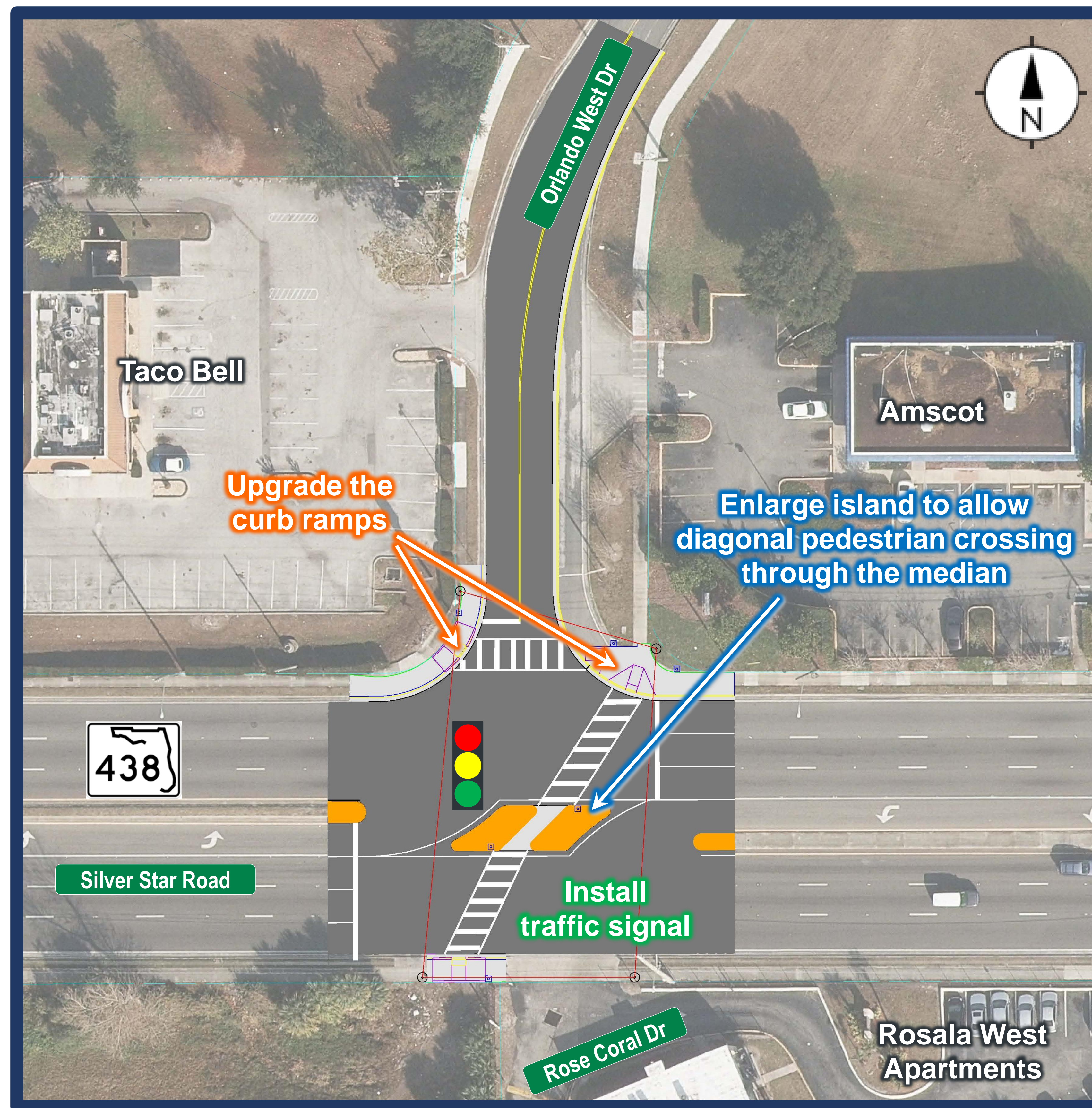


## Proposed Improvements Le Havre Boulevard / Coast Line Drive



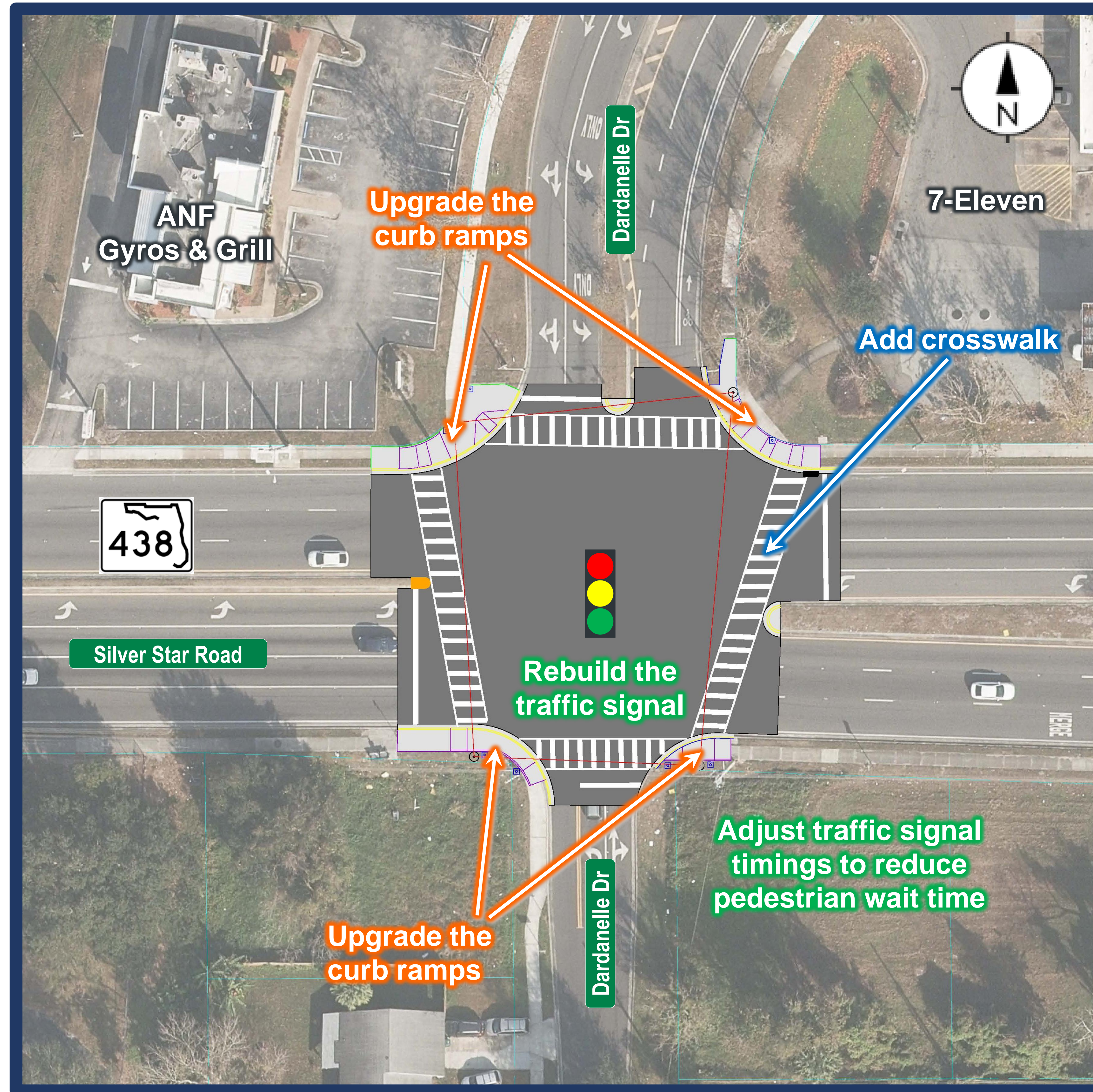


## Proposed Improvements Orlando West Drive / Rose Coral Drive





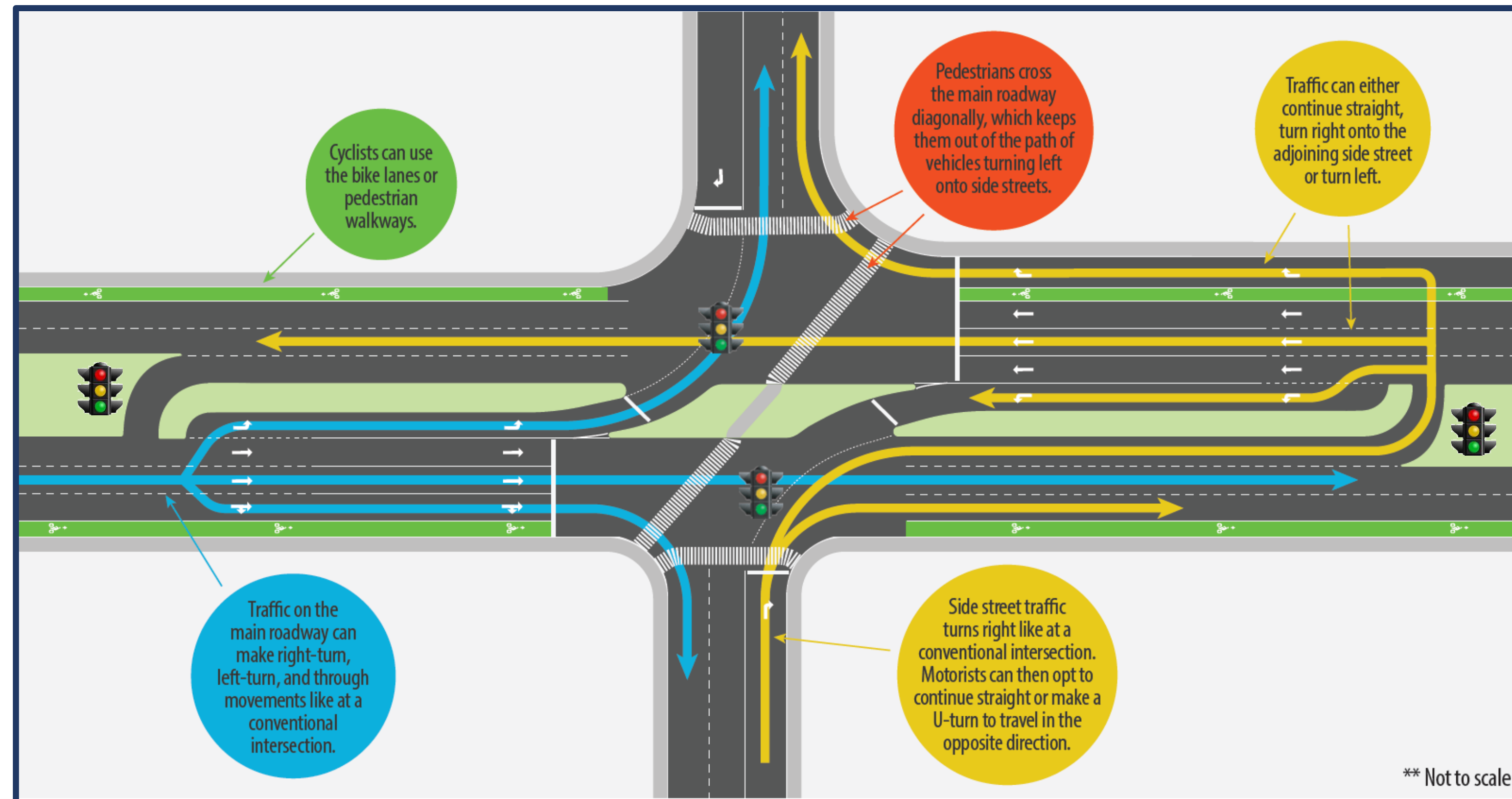
## Proposed Improvements Dardanelle Drive





# Signalized Restricted Crossing U-Turn (RCUT) Intersection

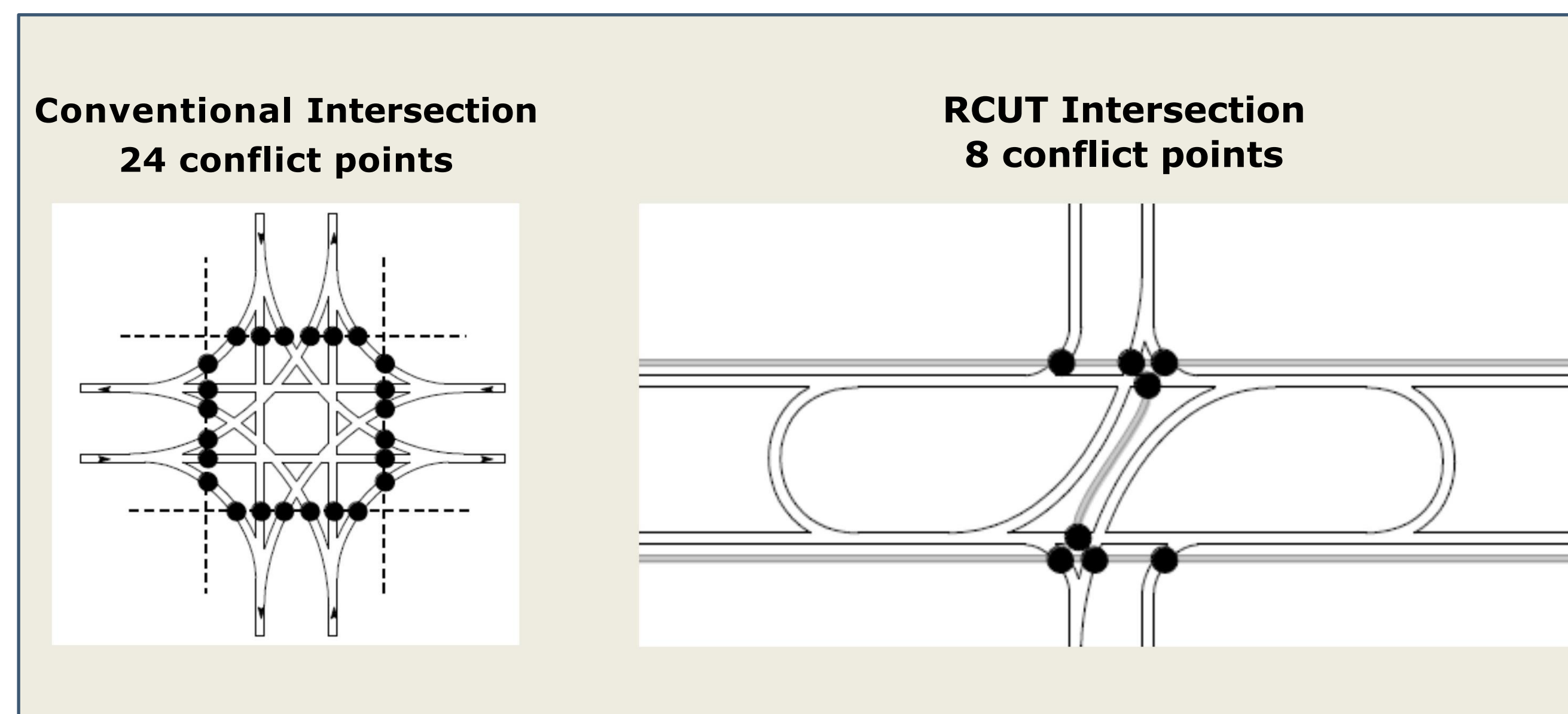
Navigating a Restricted Crossing U-turn (RCUT)



For Pedestrians: Crossing a RCUT Intersection



Pedestrian conflict points before (left) and after (right)



**40%**

Less Travel Time

+

**30%**

More Vehicles

Source: Federal Highway Administration

### Making Intersections More Efficient

The signalized RCUT design has proven to reduce travel time through the intersection and accommodate higher numbers of vehicles at the same time.

According to the Federal Highway Administration, travel time through this type of intersection can be reduced by as much as 40 percent compared with a traditional intersection. At the same time, the RCUT design can handle up to 30 percent more vehicles traveling through the intersection.