



WELCOME

Maitland Areawide Planning Study

Public Kick-off Workshop

(FPID No. 962200-1)

THE PUBLIC MEETING PRESENTATION

WILL BEGIN AT 5:45 P.M.

Welcome



Ennis Davis, AICP
FDOT Project
Manager

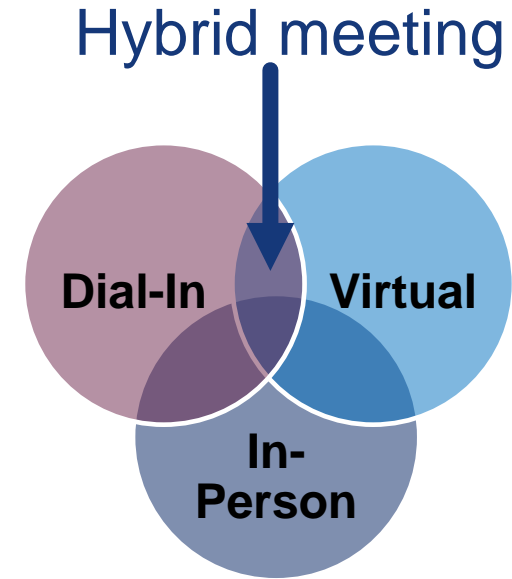


Fanny Kristiansson
Moderator
Project Consultant

About the Public Meeting

This public meeting is being conducted in a hybrid format:

- In-Person
- Virtual
- Dial-in



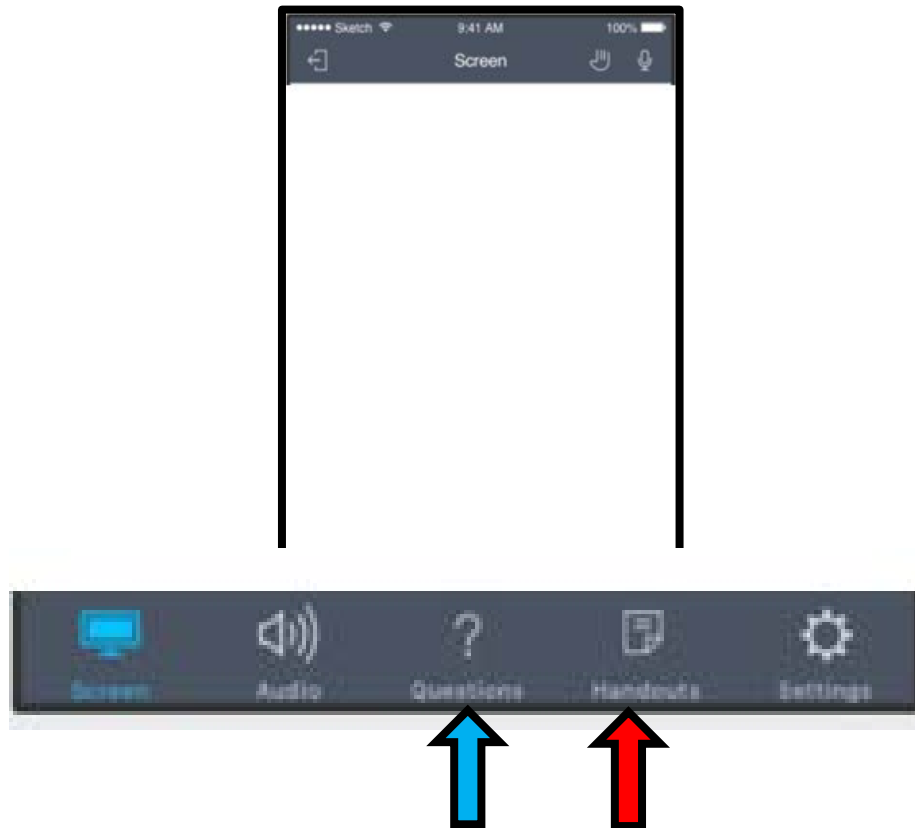
Dial-in attendees are “listen only”.

A copy of the presentation is available at CFLRoads.com/project/962200-1

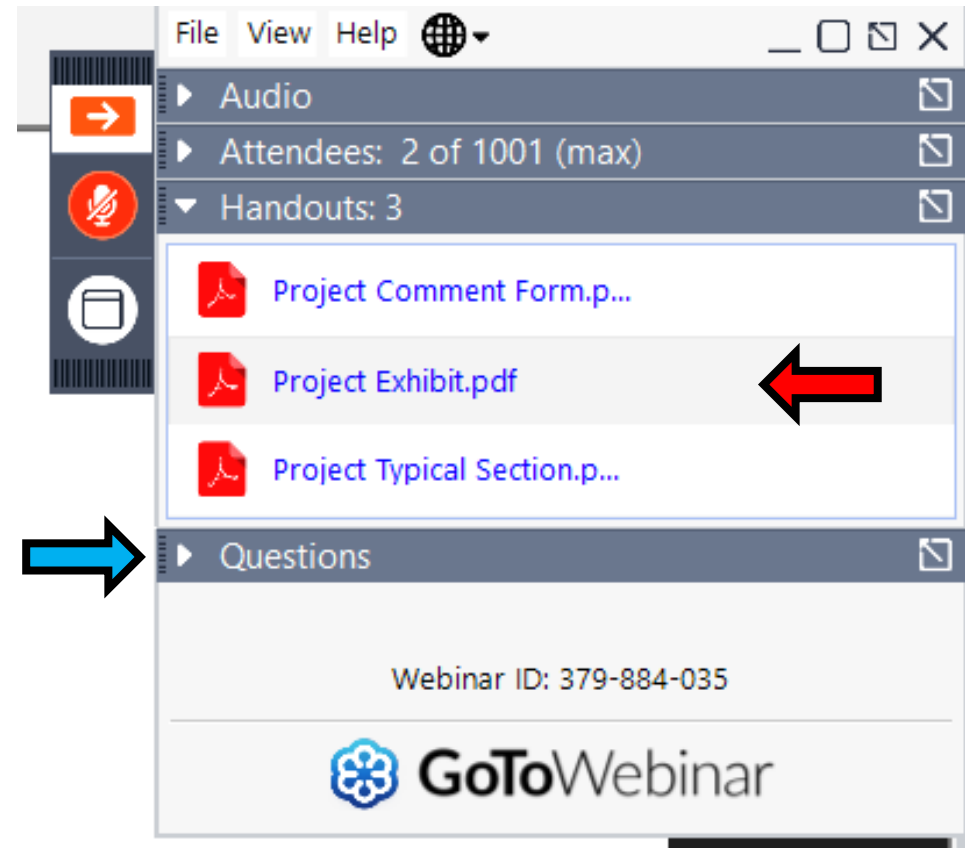


GoToWebinar Control Panel

Mobile



Desktop



To report a technical issue...



Type a message in the question box on the GoToWebinar control panel



Send an email to fkristiansson@kittelson.com



Call 407-373-1159

Title VI of the Civil Rights Act of 1964

Title VI Compliance

Public participation is solicited without regard to race, color, national origin, age, sex, religion, disability, or family status. Persons wishing to express concerns relative to FDOT compliance with Title VI may do so by contacting:

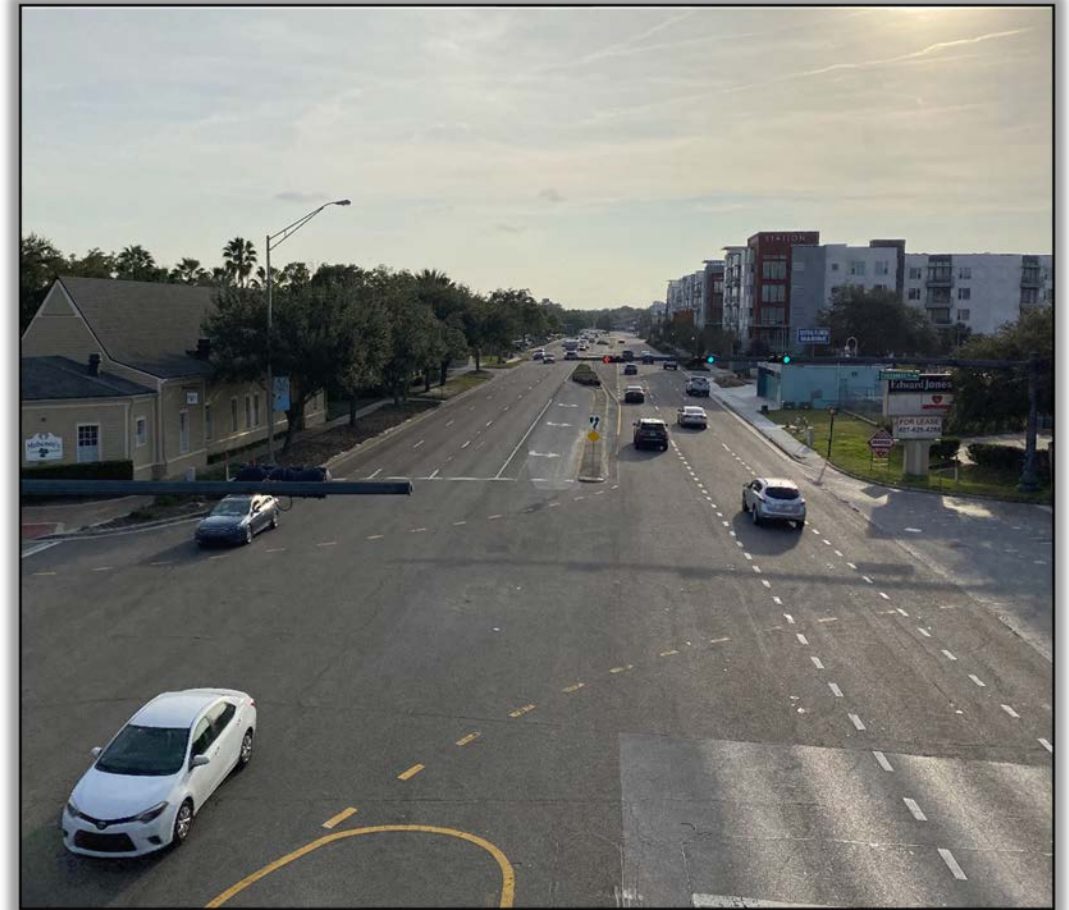
Jennifer Smith
District Five Title VI Coordinator
719 S. Woodland Blvd.
DeLand, FL 32720
386-943-5367
Jennifer.Smith2@dot.state.fl.us

Jacqueline Paramore
State Title VI Coordinator
605 Suwannee St., MS 65
Tallahassee, FL 32399-0450
850-414-4753
Jacqueline.Paramore@dot.state.fl.us

All inquiries or concerns will be handled according to FDOT procedure and in a prompt and courteous manner.

Study Purpose

- Study Objective
 - Develop a shared vision for key transportation corridors
 - Seek community input on travel options
 - Evaluate traffic data to identify key issues
 - Develop concepts and implementation strategies
- Meeting Objective
 - Provide input on your experience traveling within the corridor
 - Present existing conditions summary
 - Share your local knowledge and history
- Two (2) meetings with key milestones



Study Area

The study focuses on three corridors:

- **Orlando Avenue (U.S. 17-92)** from Maitland Avenue to Seminole County Line (1.5 miles): 33,000 to 56,000 vehicles per day
- **Maitland Boulevard (S.R. 414)** from Lake Faith Drive to the U.S. 17/92 ramps (1 mile): 60,000 vehicles per day
- **Maitland Avenue (C.R. 427)** from U.S. 17/92 to Stone Hill Drive (1 mile): 23,000 to 27,000 vehicles per day



Commitment to Safety



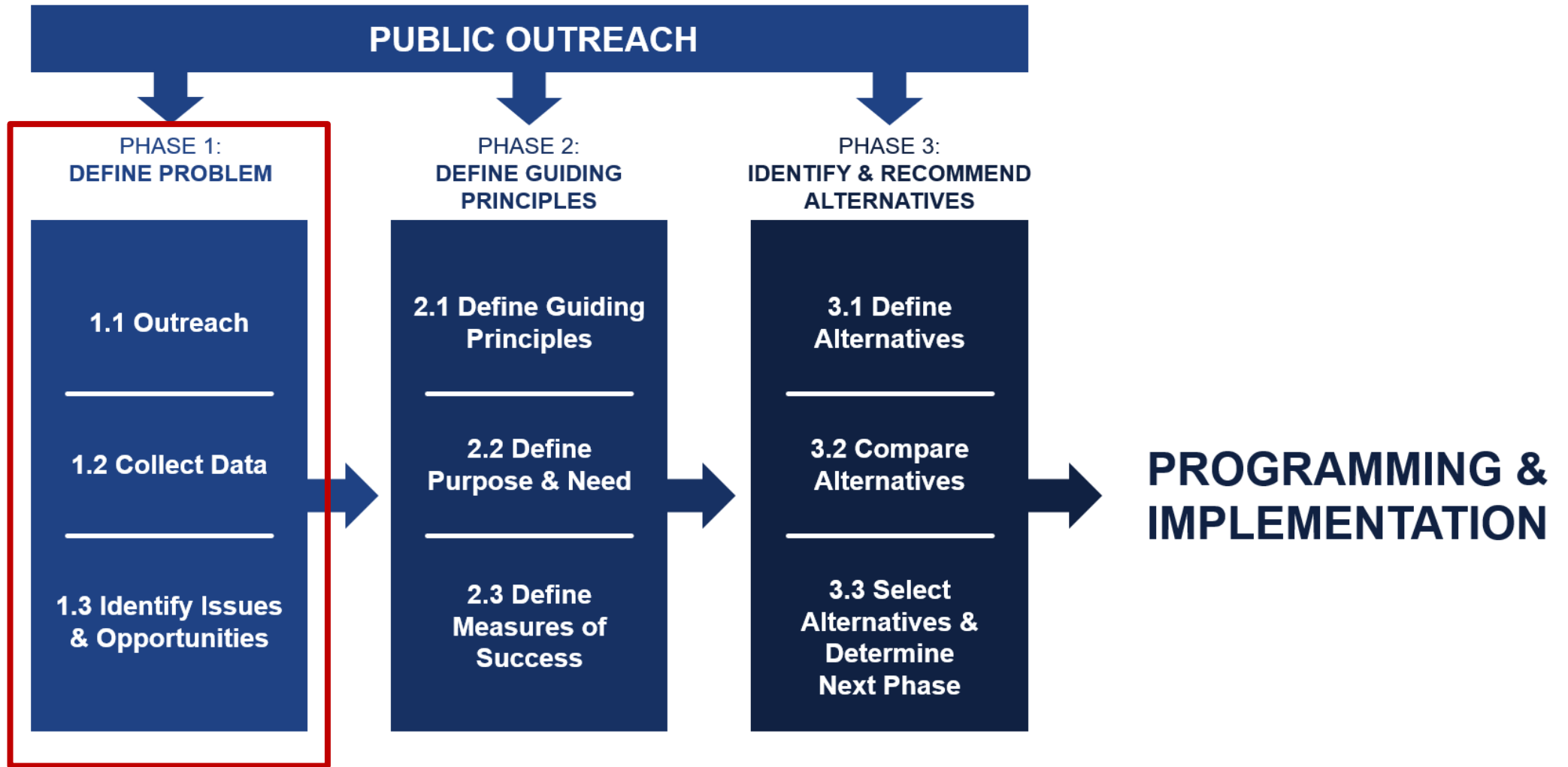
- Engage all users
- Safety is everyone's responsibility
- Short-term improvement recommendations

THE
SAFE SYSTEM

APPROACH

Zero is our goal. A Safe System is how we will get there.

Corridor Planning Process



We are here

Recent Developments



New developments or re-developments since year 2002:

- SunRail Station
- Publix Store
- Multi-Family Residential Development
- Five Mixed-Use Developments
- Office Parks
- Commercial Sites

Existing Land Use

Along or near U.S. 17-92:

- Maitland Presbyterian Church
- Center Academy Maitland
- Montessori School

Along or near Maitland Avenue:

- Jewish Community Center
- The Holocaust Memorial Resource and Education Center
- Jewish Academy of Orlando
- Lake Sybelia Elementary School
- Camen Academy of Performing Arts
- USPS
- Asbury United Methodist Church
- Art & History Museums of Maitland
- Maitland City Hall
- Maitland Public Library
- Maitland Civic Center
- Waterhouse Residence Museum



Existing Users



Car/Truck Driver



SunRail Rider



Bus Rider



Pedestrian



Cyclist

Vehicle Trip Characteristics

75%

of vehicular trips travel through the study area

25%

of vehicular trips start or end within the study area

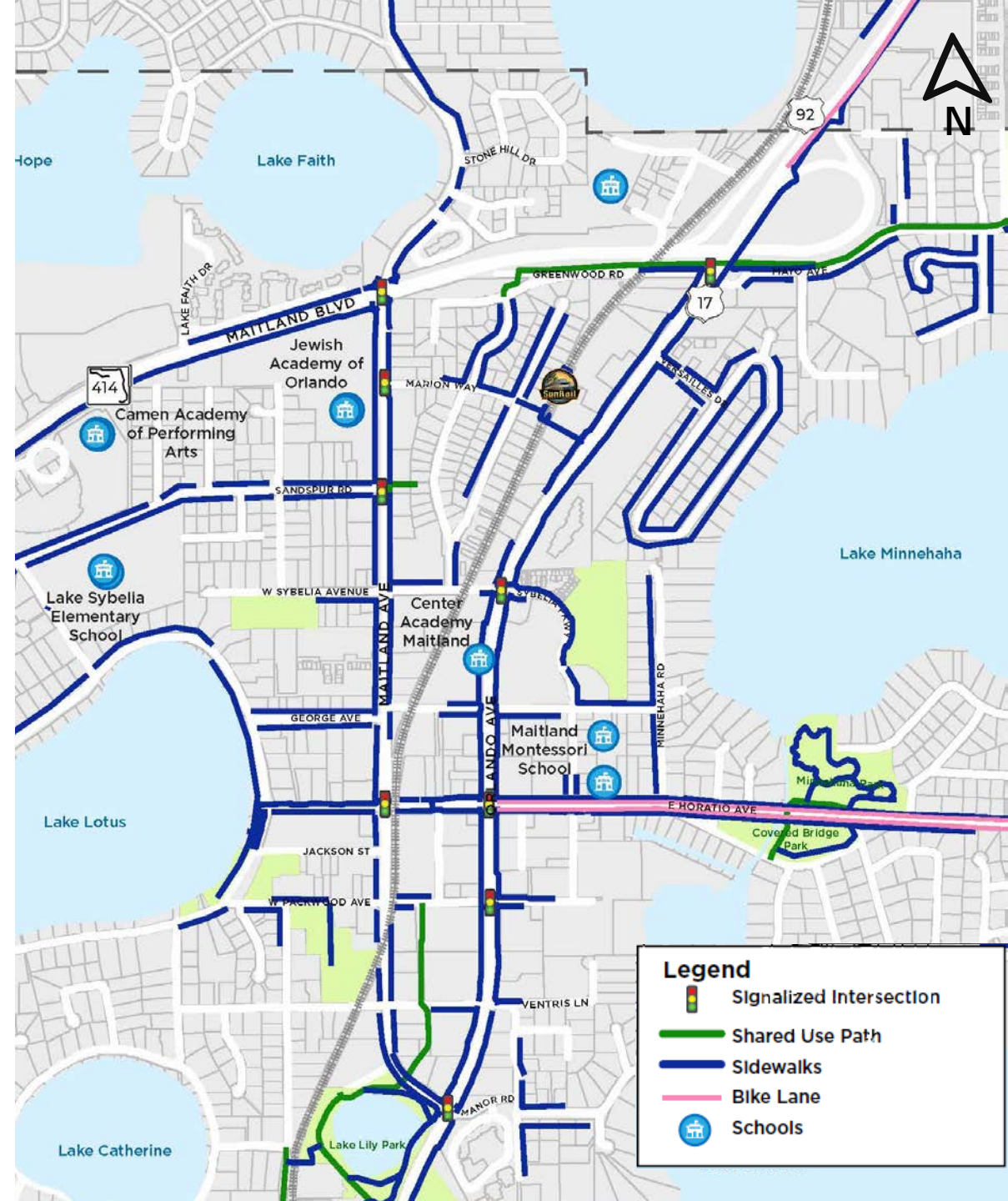
8.3 mi

average trip length for local trips



Existing Bike/Ped Infrastructure

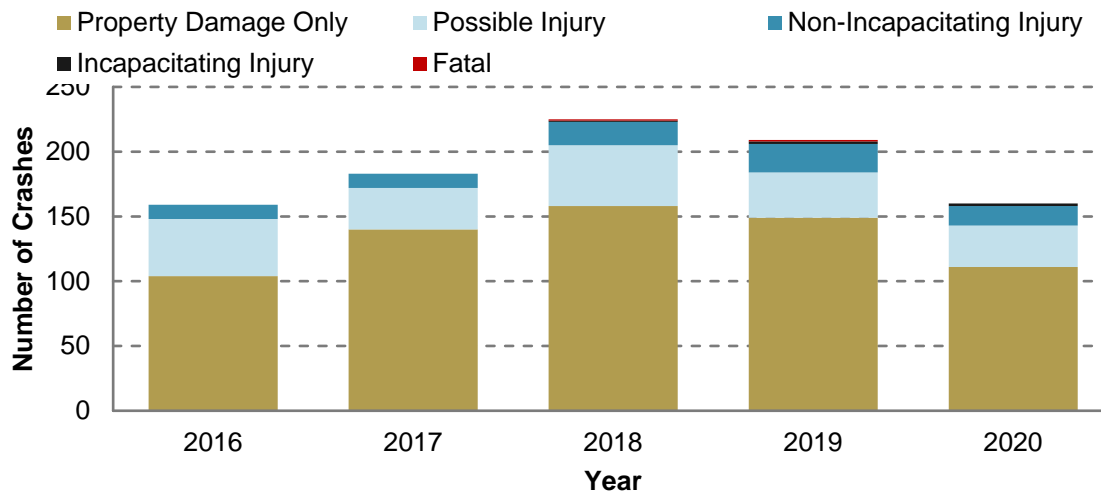
- **U.S. 17-92 and Maitland Avenue** have almost full sidewalk coverage.
- **Maitland Boulevard** only has sidewalks from Lake Faith Drive to Maitland Avenue and a pedestrian bridge.
- No dedicated bike lanes along study corridors.



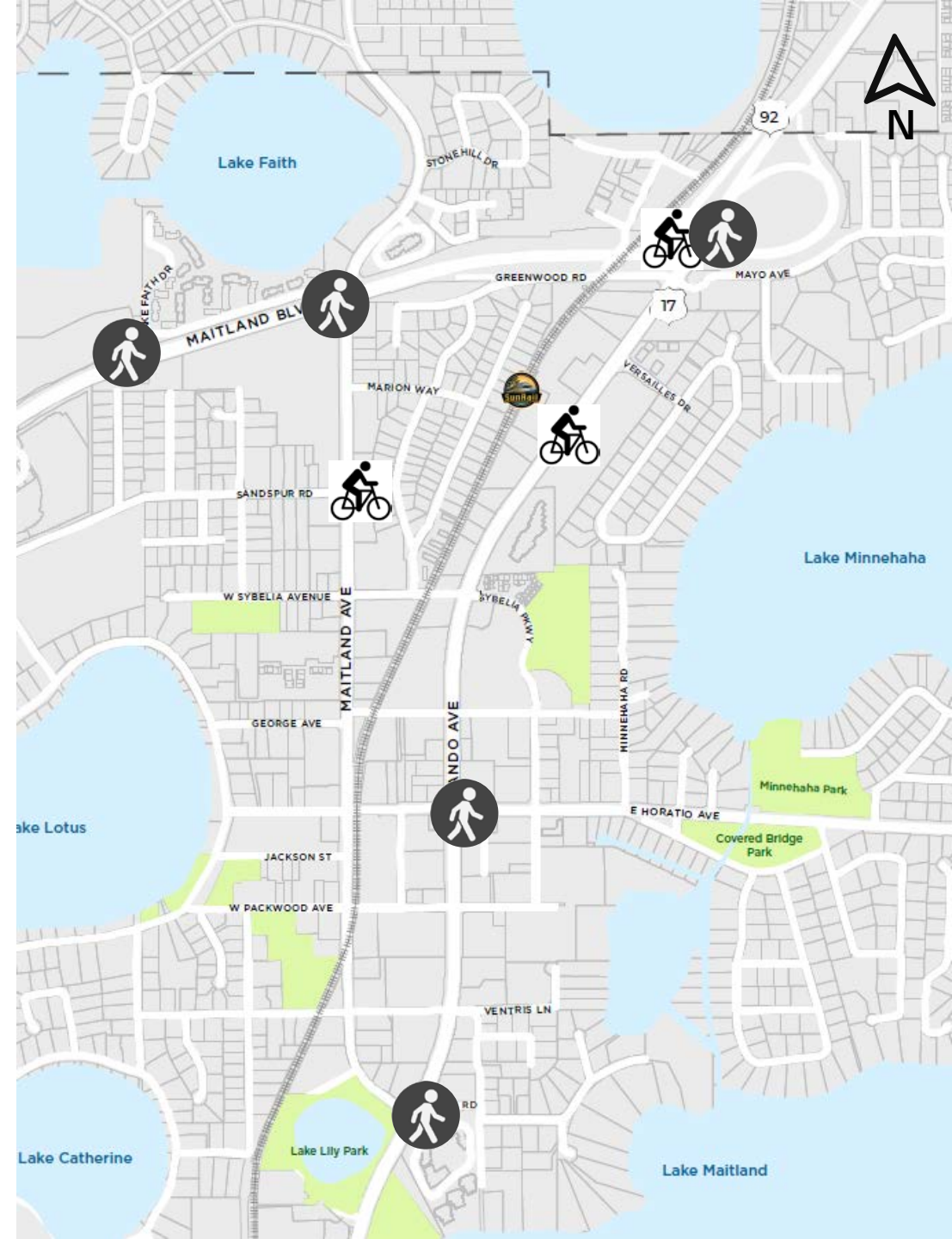
Safety Evaluation

- **936 Crashes** on study segments from 2016 to 2020:
 - 49% rear-end crashes
 - No increase in 2020 compared to 2016

Crashes by Year and Severity



- **8 Pedestrian/Bicycle Crashes**
 - 1 fatality in front of the SunRail Station



Safety Evaluation

Maitland Boulevard Off-Ramp to U.S. 17-92 had 10 off-road crashes observed since year 2017:

- 9 crashes occurred at night
- 6 crashes were with either a distracted driver or under the influence of alcohol
- 2 crashes were under wet roadway surface conditions



Source: Google Earth Aerial, February 2021.

S.R. 414

SunRail Station Non-Motorized Access

Non-ADA
Compliant
Pedestrian Bridge



U.S. 17-92

Maitland Station

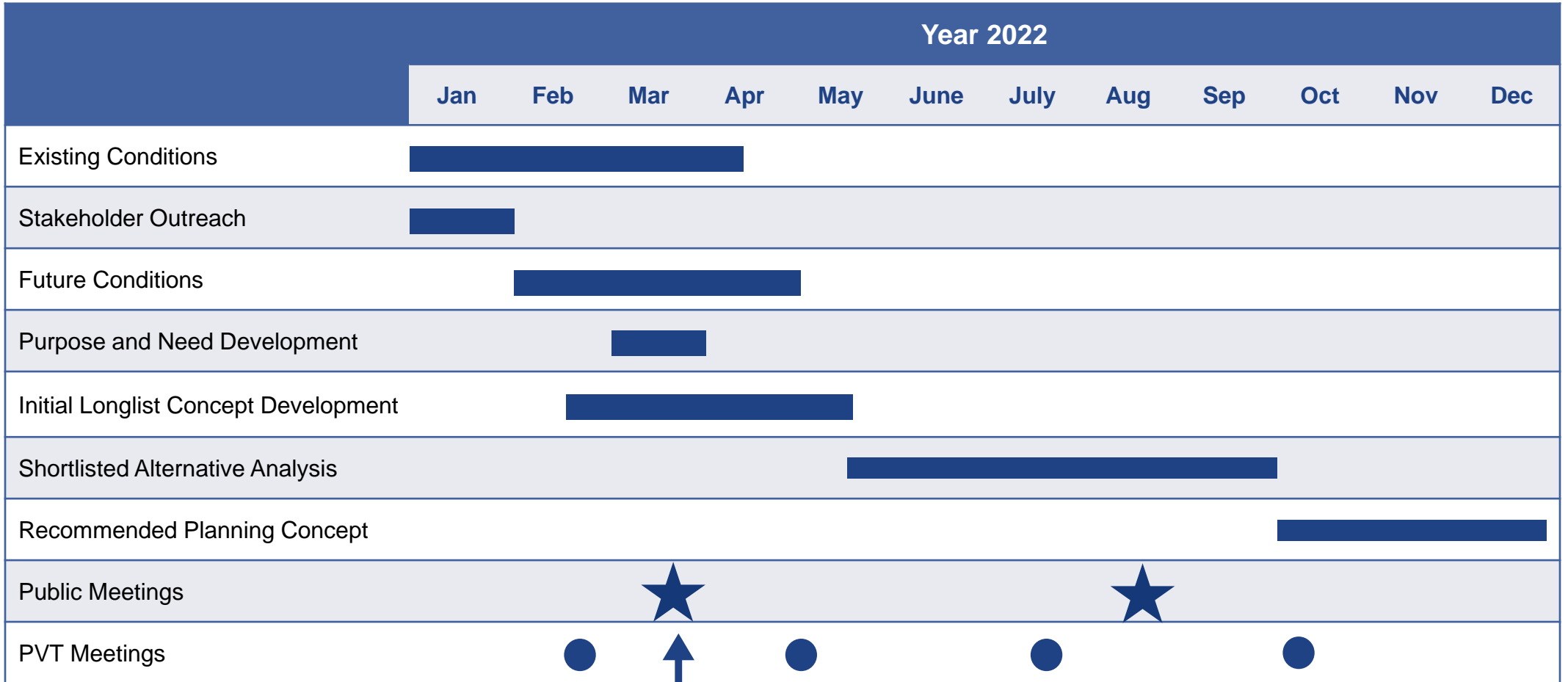
Entrance 1: walk & bike
to neighborhood streets

Entrance 2: walk & bike to
U.S. 17/92 north sidewalk, the
next crossing is 0.25 miles.

Entrance 3: walk & bike
to U.S. 17/92 south
sidewalk, the next
crossing is 0.21 miles.

Open Median,
Unmarked Crossing

Project Schedule



We are here!

Share Your Comments and Questions

In-person

Virtually

Mail

By phone



Please submit your comments and questions by March 16, 2022.

Ways to Submit Comments & Questions

- In-person
 - Submit Comment Form
- Virtually
 - GoTo Webinar: Type the comment in the Questions box
 - Online at CFLRoads.com/project/962200-1
- Contact the FDOT Project Manager directly

Project Manager Contact Information

Ennis Davis, AICP
719 S. Woodland Blvd., MS 501
DeLand, FL 32720
Ennis.Davis@dot.state.fl.us
(386) 943-5422

Thank you for participating.

Please submit comments and questions by March 16, 2022

Ennis.Davis@dot.state.fl.us



719 S. Woodland Blvd., MS 501, DeLand, FL 32720



386-943-5422



CFLRoads.com/project/962200-1

We are experiencing technical difficulties

**Our team is actively
working to fix the issue and
hope to have this resolved
soon.**

Thank you for your patience.