

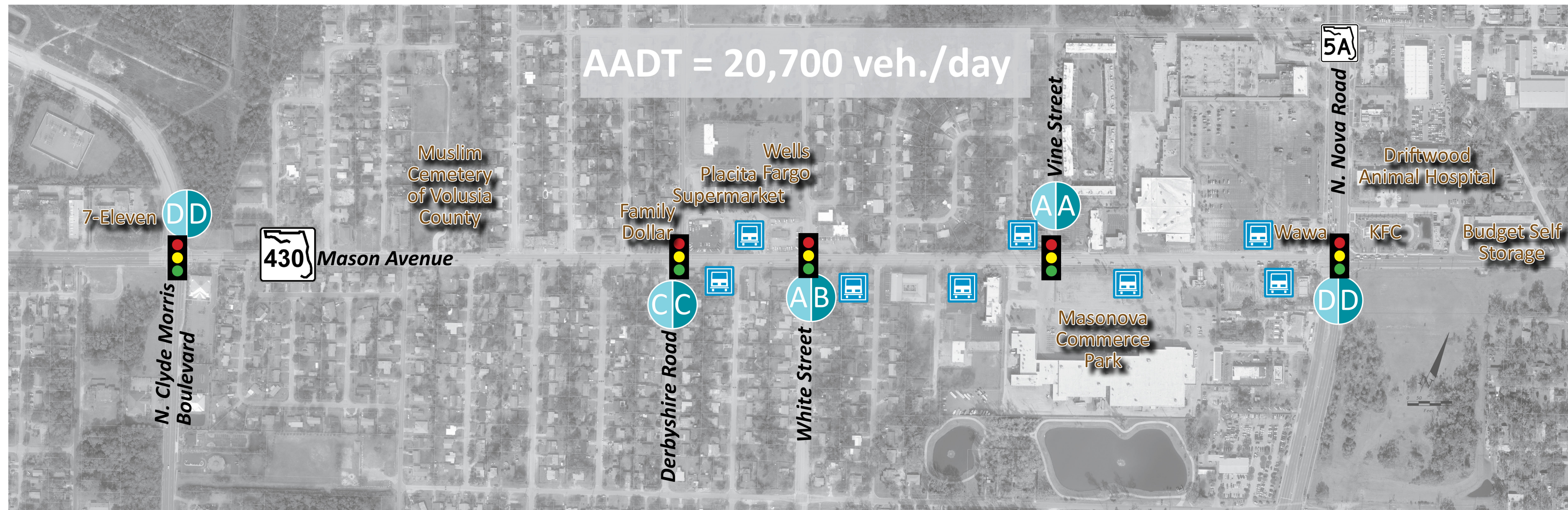


MASON AVENUE (S.R. 430) CORRIDOR PLANNING STUDY

From Clyde Morris Boulevard (S.R. 483) to Riverside Drive / North Beach Street

FM Number 446756-1

Existing Operations Analysis



Legend

- Signalized Intersection
- Bus Stop
- AM Peak Hour Level of Service
- PM Peak Hour Level of Service

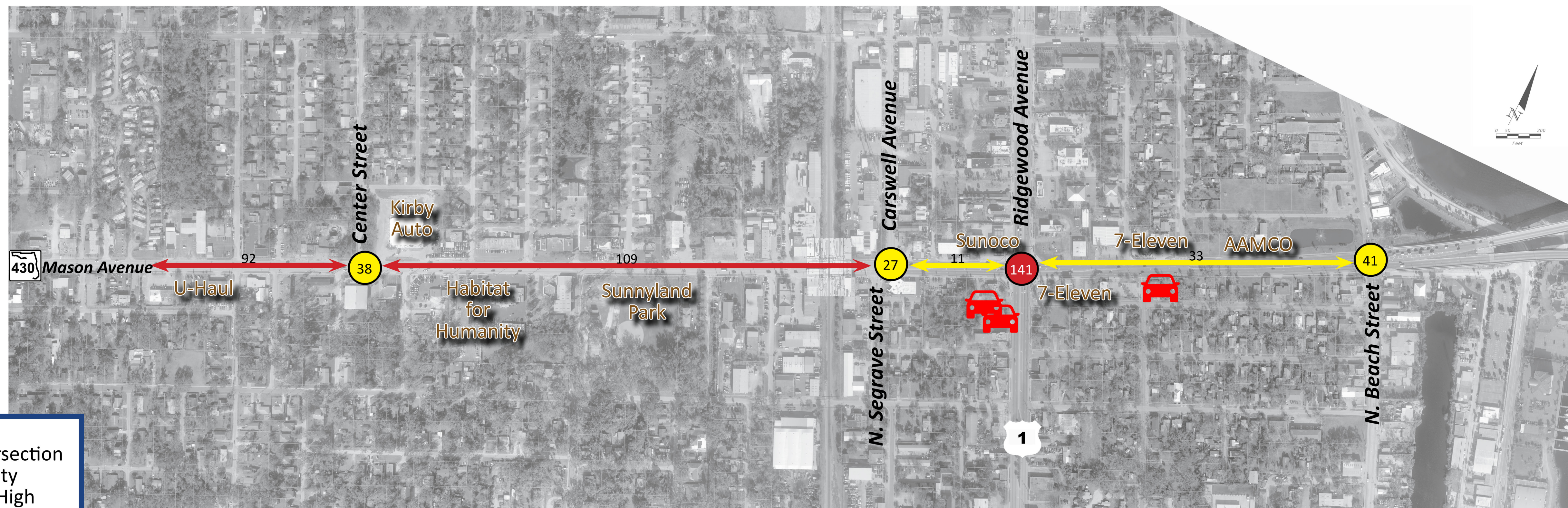
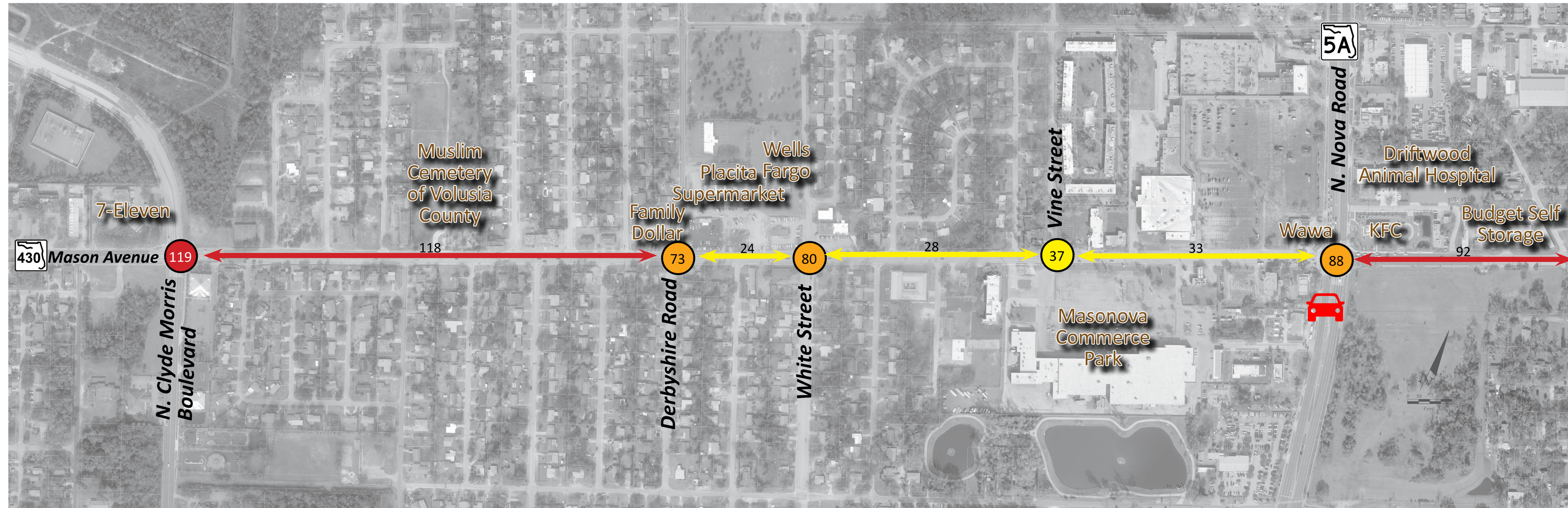


MASON AVENUE (S.R. 430) CORRIDOR PLANNING STUDY

From Clyde Morris Boulevard (S.R. 483) to Riverside Drive / North Beach Street

FM Number 446756-1

Vehicular Crash History



Legend

- Signalized Intersection
- 🚗 Vehicular Fatality
- 141 # of Crashes - High
- 73 # of Crashes - Medium
- 38 # of Crashes - Low

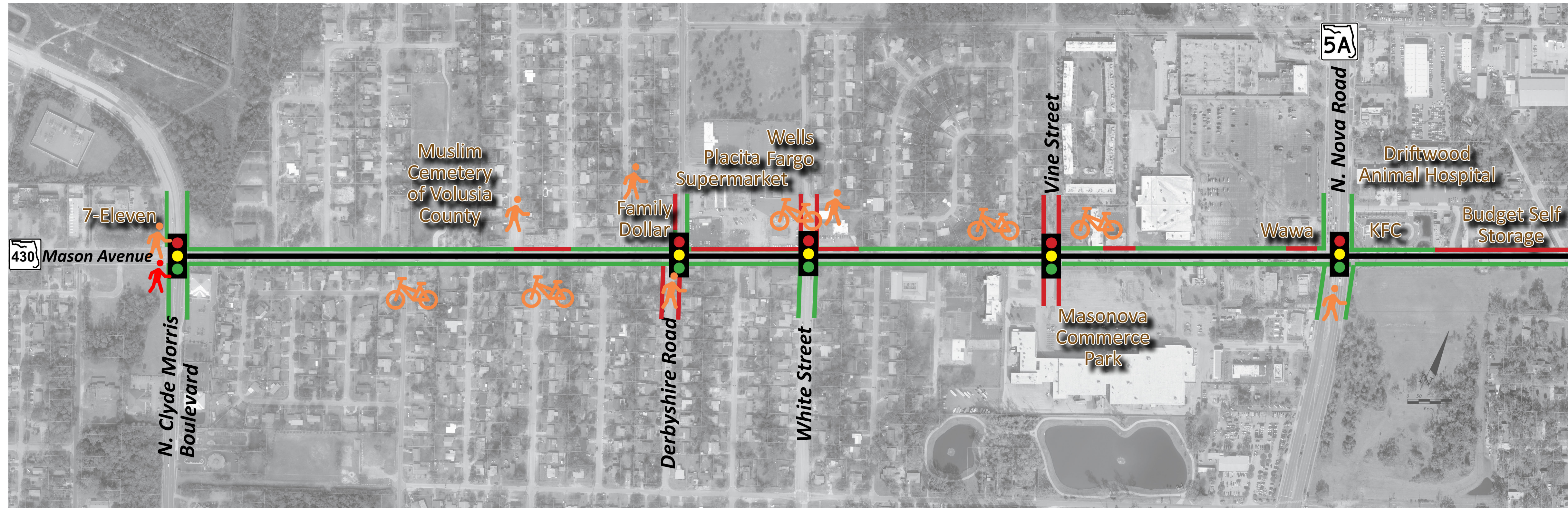


MASON AVENUE (S.R. 430) CORRIDOR PLANNING STUDY

From Clyde Morris Boulevard (S.R. 483) to Riverside Drive / North Beach Street

FM Number 446756-1

Sidewalk Gaps & Pedestrian / Bicycle Crashes



- Legend**
- Signalized Intersection
 - Corridor Study
 - Existing Sidewalk
 - Sidewalk Gaps
 - Existing Bicycle Lane
 - Pedestrian Crash
 - Pedestrian Fatality
 - Bicycle Crash