

# Conway Road (S.R. 15) at Simmons Road Safety Improvements



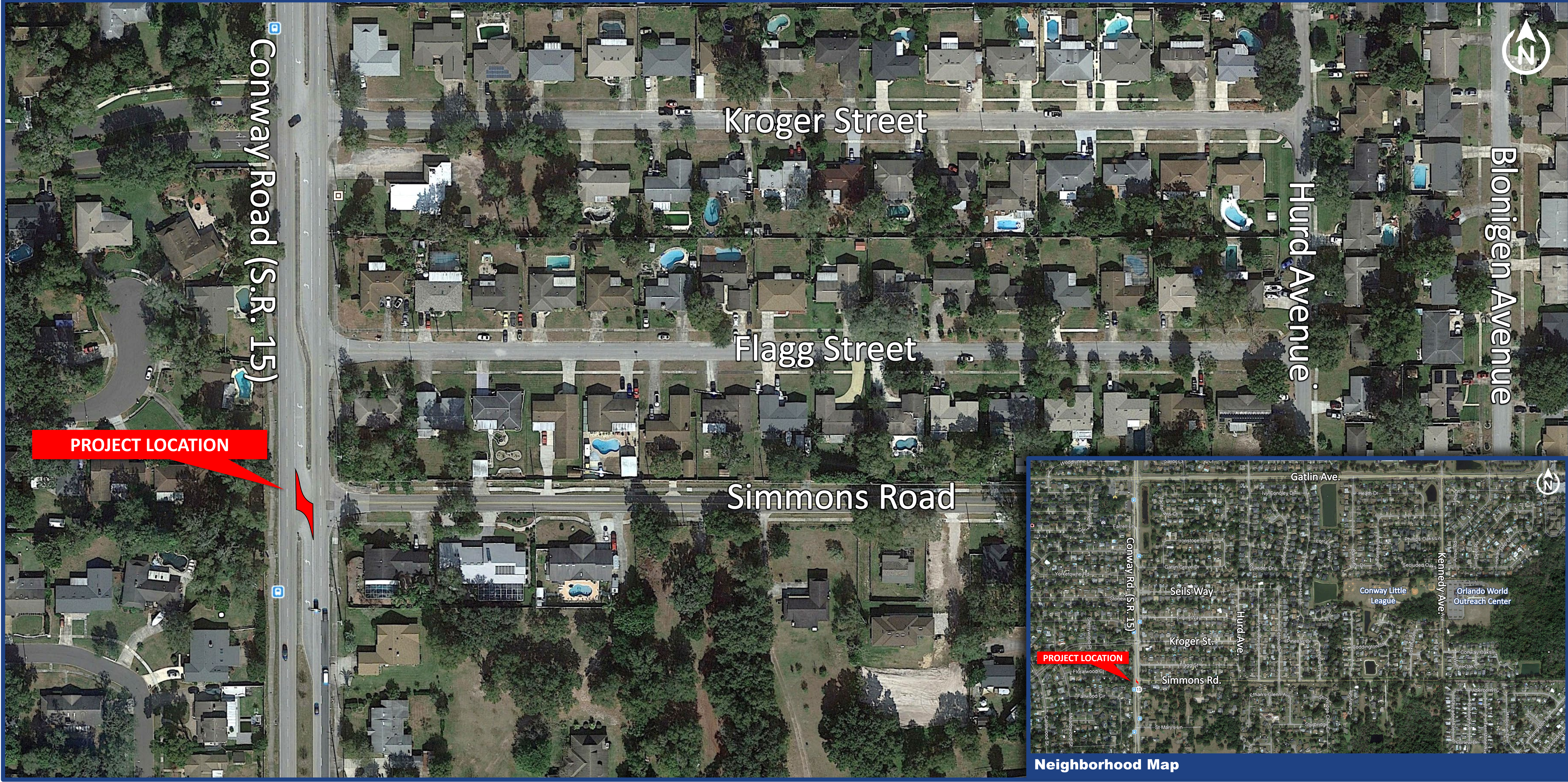
**Welcome to the Public Hearing!**  
**June 29, 2021**

**Orange County, Florida**  
**Financial Project Identification (FPID) No. 992100-3**  
**[www.CFLRoads.com/project/992100-3](http://www.CFLRoads.com/project/992100-3)**





# Project Location



Download this exhibit on the project website  
[www.CFLRoads.com/project/992100-3](http://www.CFLRoads.com/project/992100-3)  
Orange County, Florida  
Financial Project Identification (FPID) No. 992100-3

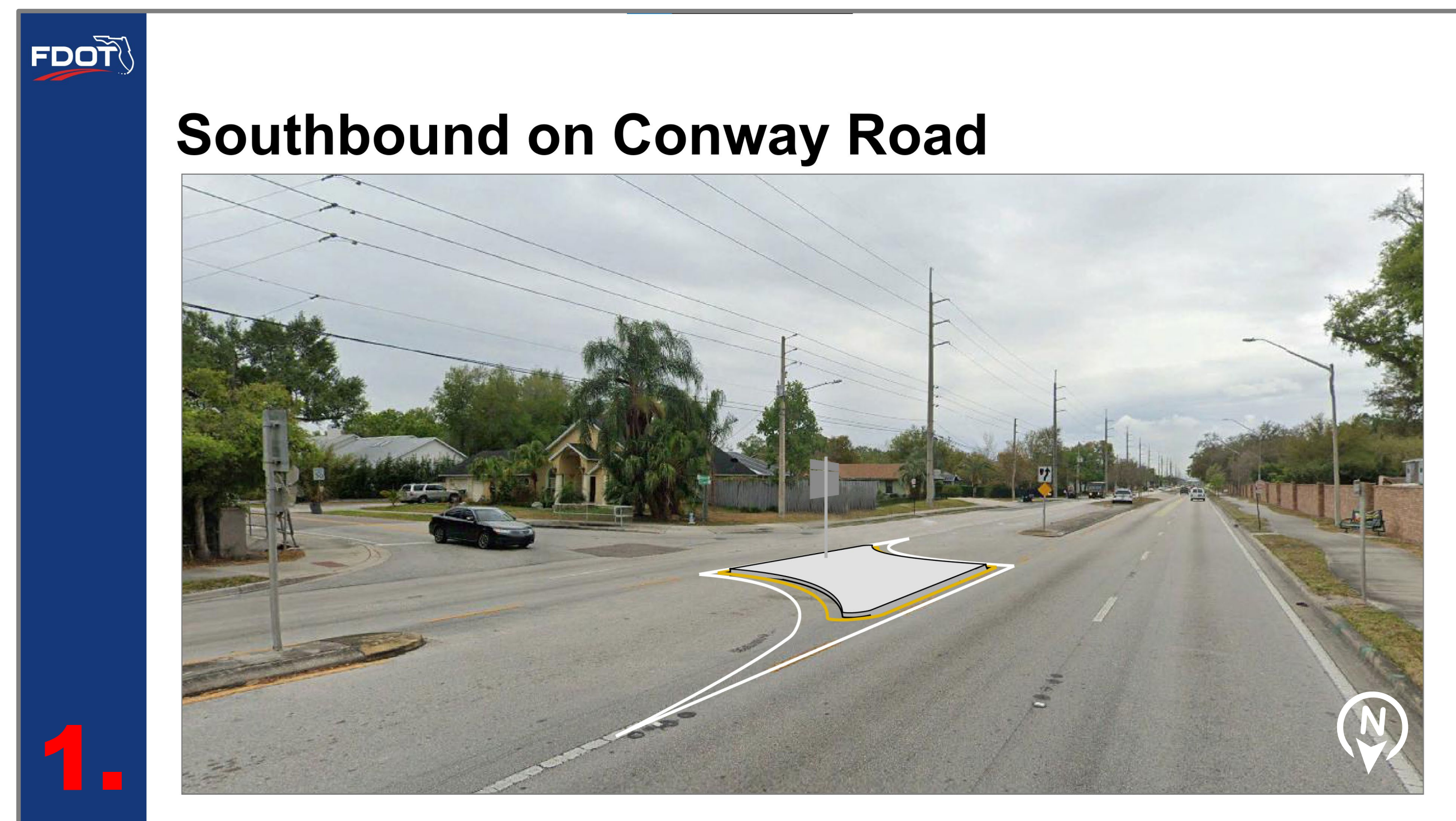




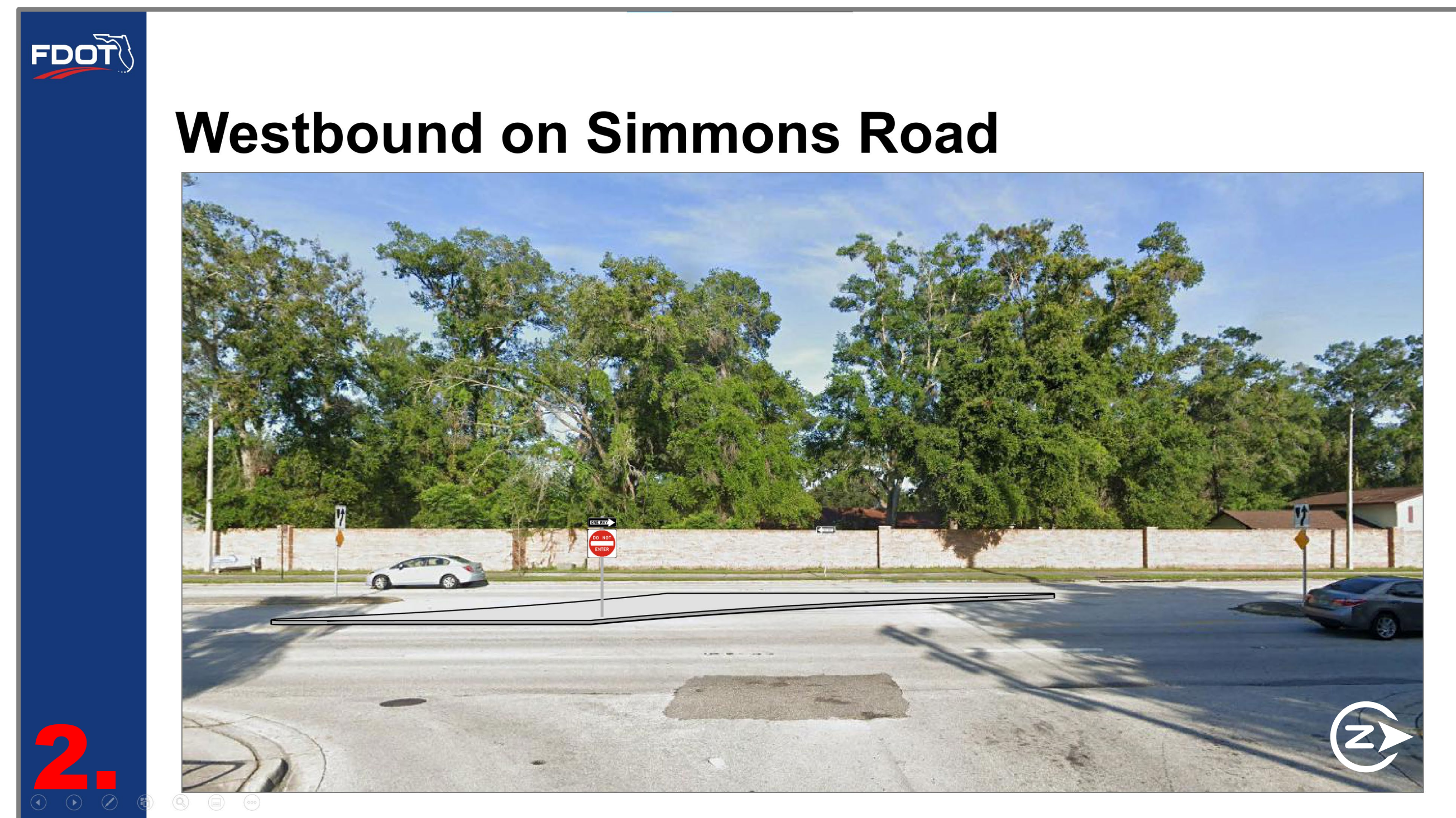
# Proposed Improvements



Project Map showing the proposed improvements and viewpoints for the renderings to the right.



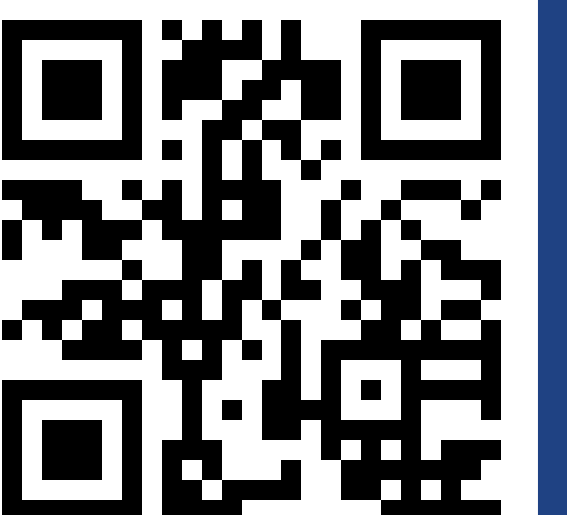
Proposed improvements looking southbound on Conway Road, including the construction of a median island, creating a bi-directional median opening.



Proposed improvements looking westbound on Simmons Road, including the construction of a median island, creating a bi-directional median opening. Motorists will only be able to turn right onto Conway Road.



Download this exhibit on the project website  
[www.CFLRoads.com/project/992100-3](http://www.CFLRoads.com/project/992100-3)  
 Orange County, Florida  
 Financial Project Identification (FPID) No. 992100-3





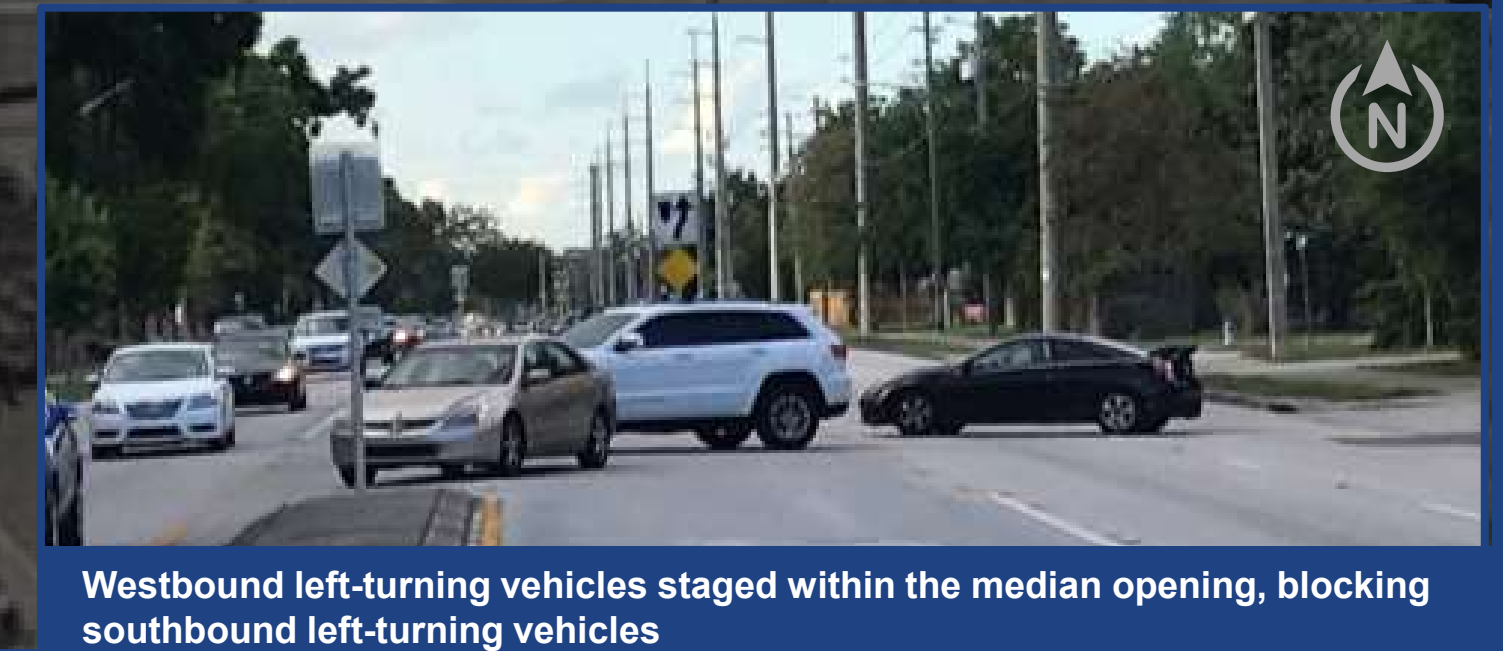
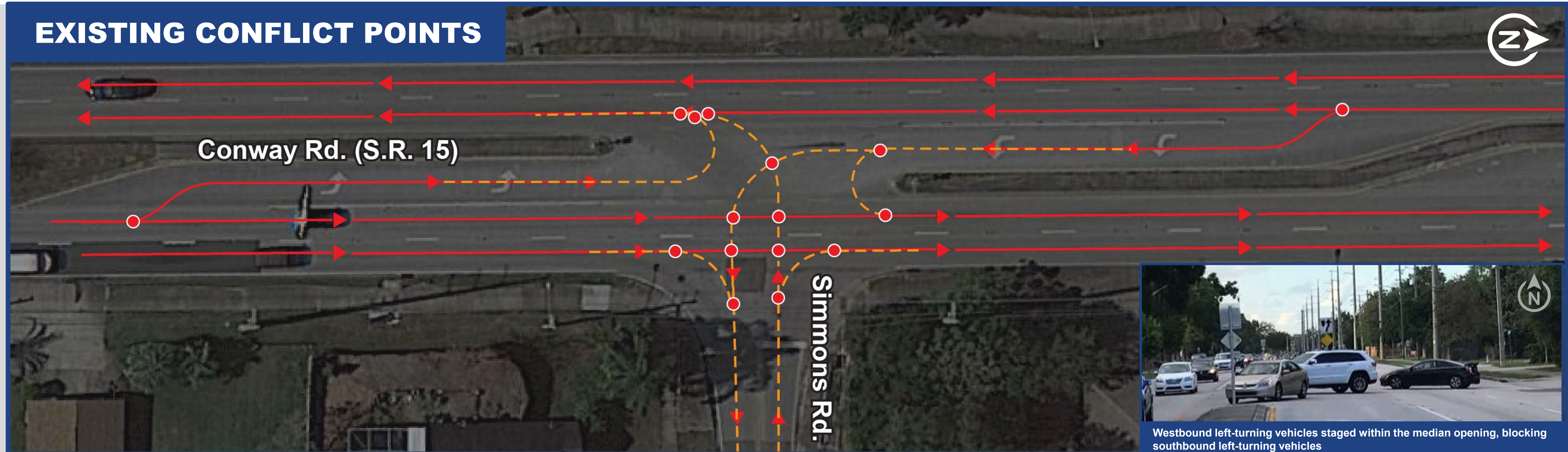
# Conflict Points

Conflict points are locations along a roadway where the paths of two vehicles can legally cross ... just not at the same time. Each conflict point is a location where a crash can occur.

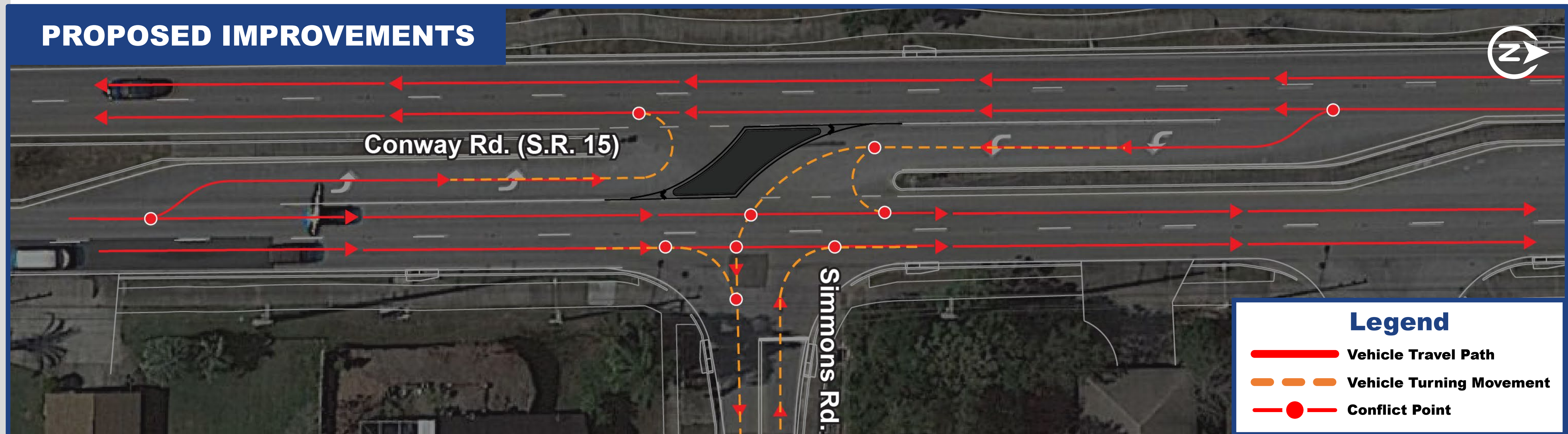
Currently, there is a full median opening at the T-intersection of Conway Road and Simmons Road. Drivers intending to turn left from westbound Simmons Road onto southbound Conway Road sometimes backup into the intersection, blocking the northbound lanes on Conway Road. Traffic intending to turn left from southbound Conway Road onto eastbound Simmons Road can also be blocked by traffic in the median intending to merge onto southbound Conway Road.

The proposed improvements aim to reduce these points of conflict.

## EXISTING CONFLICT POINTS



## PROPOSED IMPROVEMENTS



**Legend**

- Vehicle Travel Path
- - - Vehicle Turning Movement
- Conflict Point



Download this exhibit on the project website  
[www.CFLRoads.com/project/992100-3](http://www.CFLRoads.com/project/992100-3)

Orange County, Florida  
 Financial Project Identification (FPID) No. 992100-3

