

# ROADWAY IMPROVEMENTS

Space Commerce Way from NASA Parkway West to Kennedy Parkway

**Brevard County**

Financial Project  
Identification  
(FPID) No.:  
440424-2

## PROJECT DESCRIPTION

The Florida Department of Transportation (FDOT) is widening Space Commerce Way to four lanes for approximately 2.7 miles from NASA Parkway West to Kennedy Parkway. This will support future growth and economic vitality by allowing the transportation of oversized space industry vehicles to launch sites, as well as regular public and commercial traffic between the mainland near Titusville and North Merritt Island (and other barrier islands in that vicinity). It will provide access for daily visitors to the Kennedy Space Center Visitor Complex, as well as support the manufacturing and research workforce of Exploration Park.

## WHAT TO EXPECT

Motorists should expect intermittent lane closures on Space Commerce Way during construction. Electronic message boards and other signage will be used to direct traffic around closures. Access to side streets, residences, and businesses will be maintained throughout the duration of the project.

The level of work activity will vary during different phases of construction, and the schedule may change due to weather or other unforeseen circumstances. For the most current project details and lane closure information, please visit FDOT's Central Florida website at [www.cflroads.com](http://www.cflroads.com).

## CONTRACTOR

Jr. Davis Construction Company, Inc.

## PROJECT COST

\$22.9 million

## PROJECT START

July 2023

## ESTIMATED COMPLETION

Early 2025

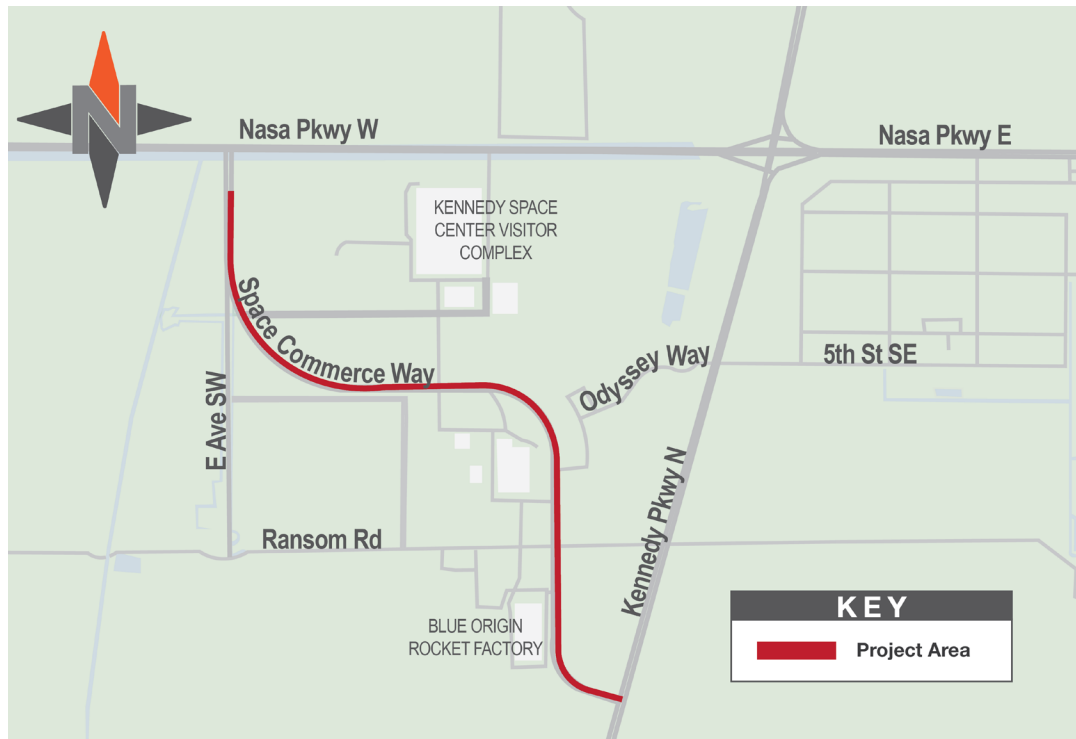


FOR QUESTIONS, CONCERNS, OR  
PROJECT UPDATES

Send a request to:

Ashley Ingham  
Community Outreach Specialist  
321-634-6111

[Ashley.Ingham@dot.state.fl.us](mailto:Ashley.Ingham@dot.state.fl.us)



For more information,  
scan the QR code above  
or visit the project website at  
[www.cflroads.com/project/440424-2](http://www.cflroads.com/project/440424-2)



Follow us on social media



[CFLRoads.com](http://CFLRoads.com)



[Facebook.com/MyFDOTCFL](https://Facebook.com/MyFDOTCFL)



[@MyFDOT\\_CFL](https://twitter.com/MyFDOT_CFL)



[@MyFDOT\\_CFL](https://www.instagram.com/MyFDOT_CFL)