

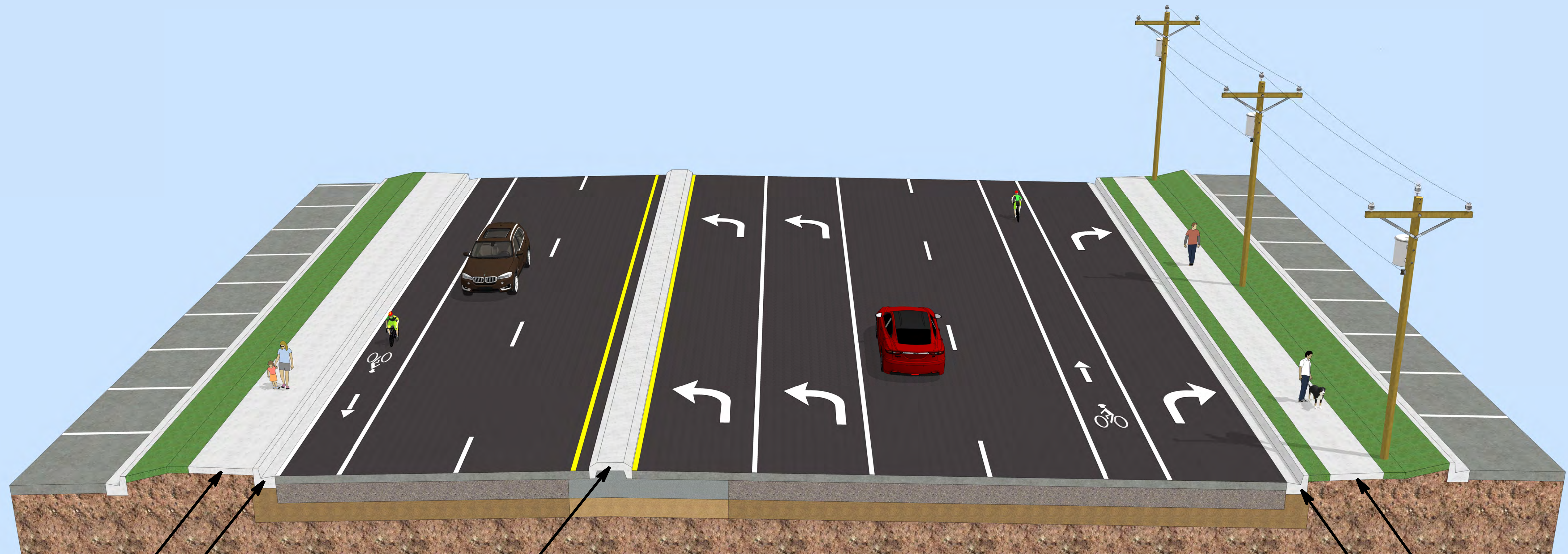


S.R. 500 (U.S. 192)

PROPOSED TYPICAL SECTION NO. 1

WEST OF HOLLYWOOD BOULEVARD/EVANS ROAD INTERSECTION

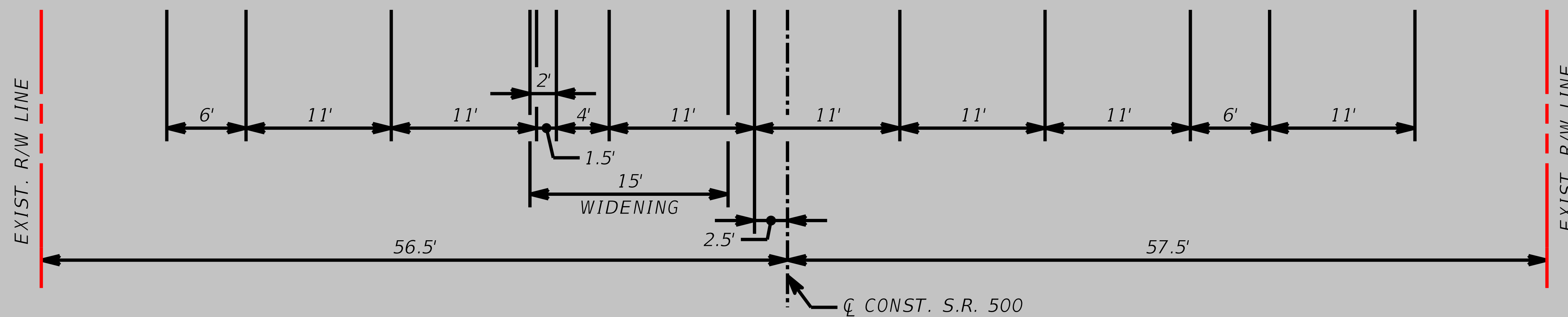
FPID NO.: 433655-1-52-01



EXIST. CONC. SIDEWALK
EXIST. CURB & GUTTER

4' TRAFFIC SEPARATOR

EXIST. CONC. SIDEWALK
EXIST. CURB & GUTTER





S.R. 500 (U.S. 192)

PROPOSED TYPICAL SECTION NO. 2

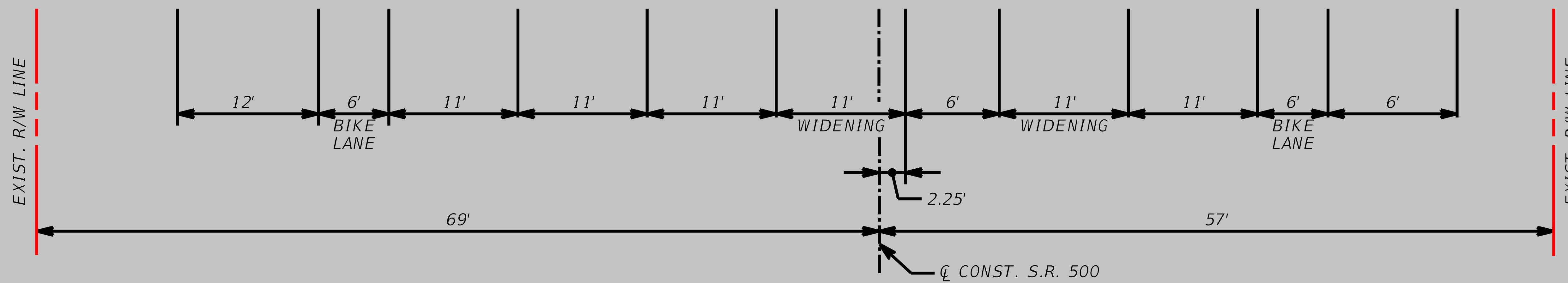
EAST OF HOLLYWOOD BOULEVARD/EVANS ROAD INTERSECTION

FPID NO.: 433655-1-52-01



EXIST. CONC. SIDEWALK
EXIST. CURB & GUTTER

EXIST. CONC. SIDEWALK
EXIST. CURB & GUTTER



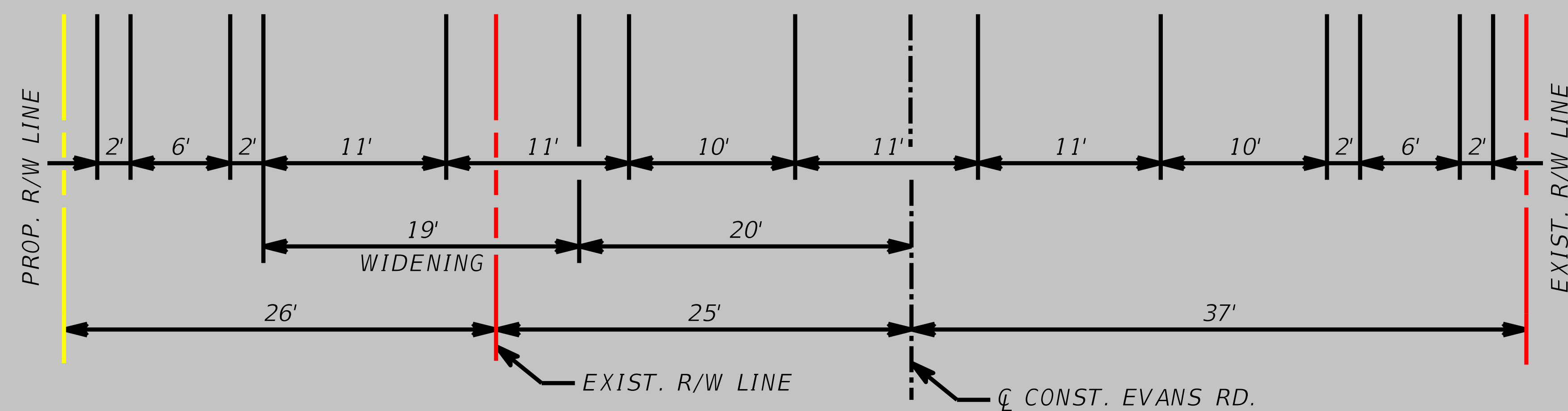


HOLLYWOOD BOULEVARD

PROPOSED TYPICAL SECTION NO. 3

SOUTH OF S.R. 500 (U.S. 192) INTERSECTION

FPID NO.: 433655-1-52-01

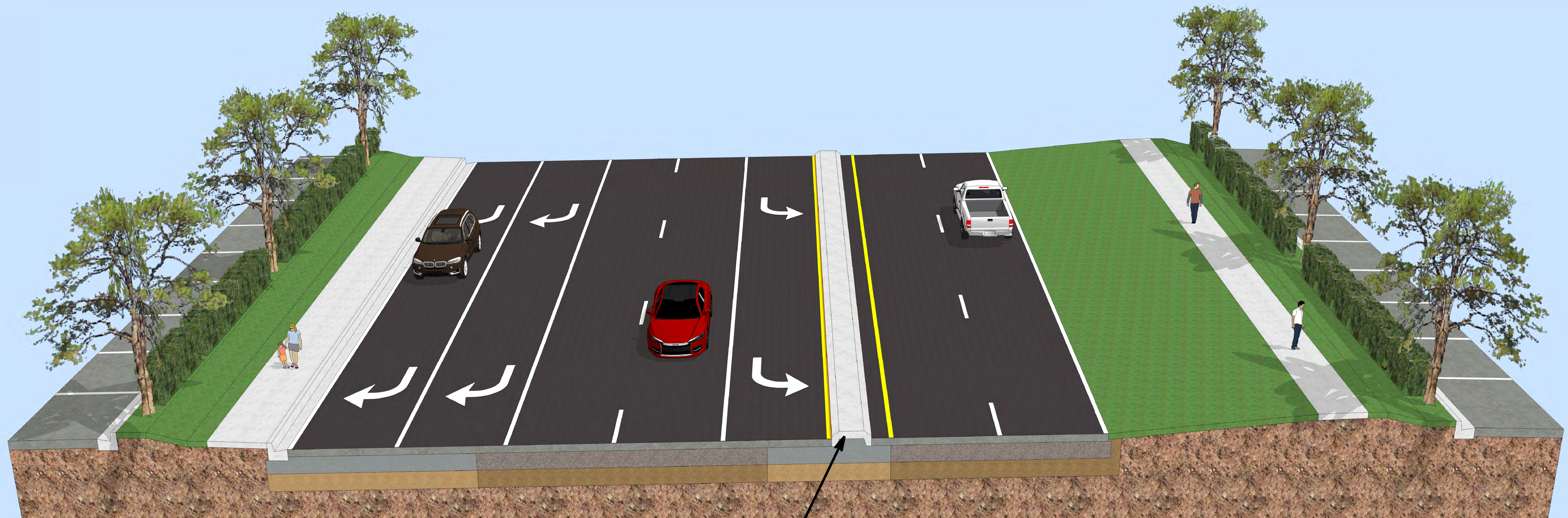




EVANS ROAD

PROPOSED TYPICAL SECTION NO. 4 NORTH OF S.R. 500 (U.S. 192) INTERSECTION

FPID NO.: 433655-1-52-01



4' TRAFFIC SEPARATOR

