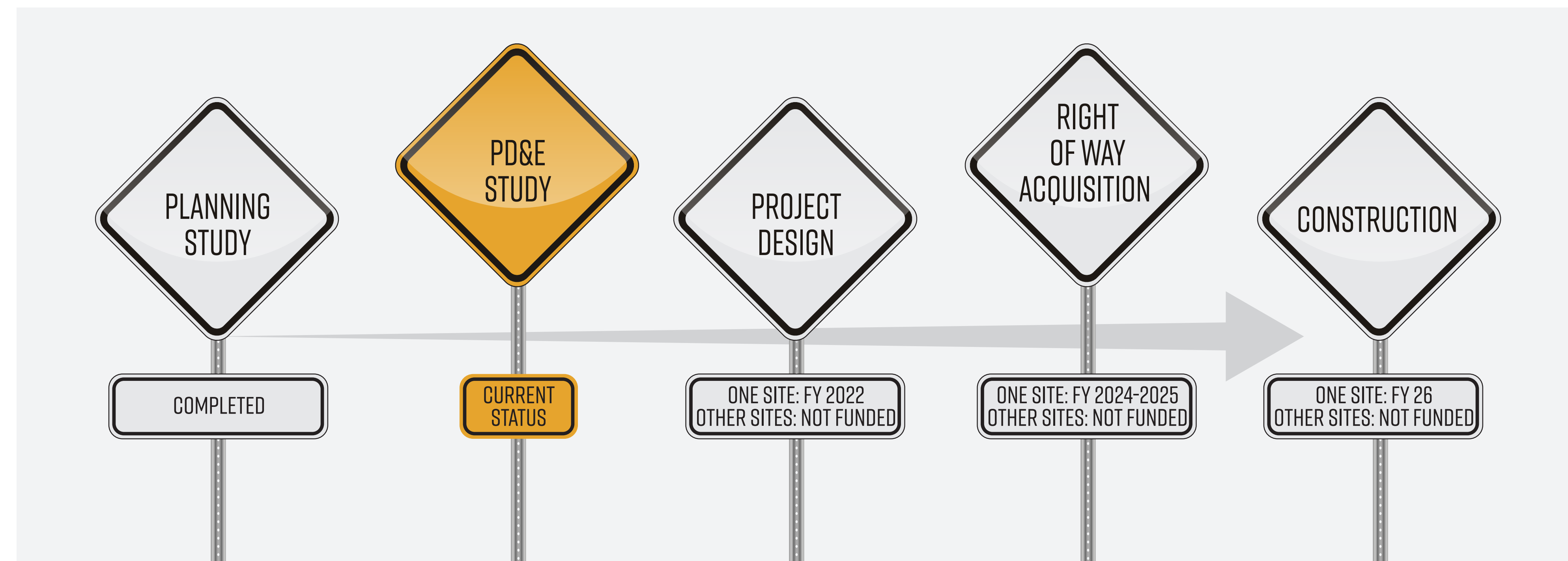


# TRUCK AND FREIGHT ALTERNATIVE SITE ANALYSIS PROJECT DEVELOPMENT AND ENVIRONMENT (PD&E) STUDY

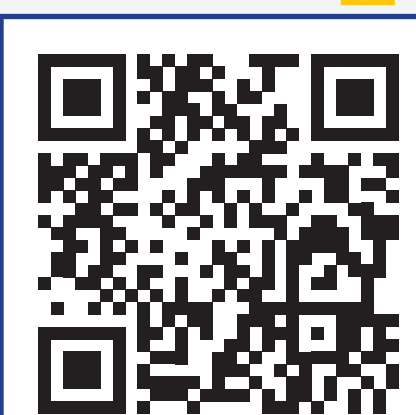
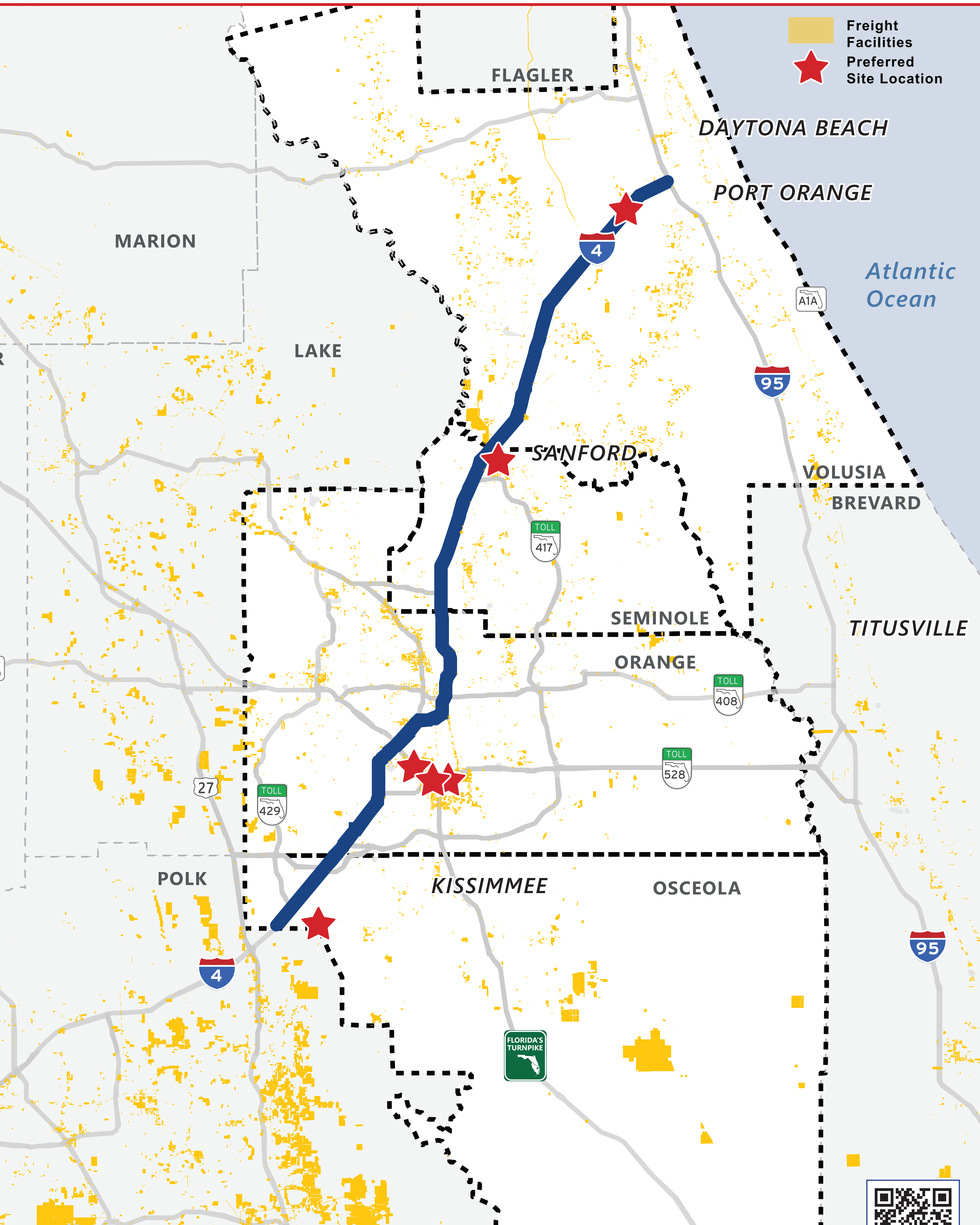


Orange, Osceola, Seminole & Volusia County, Florida



# TRUCK AND FREIGHT ALTERNATIVE SITE ANALYSIS PROJECT DEVELOPMENT AND ENVIRONMENT (PD&E) STUDY



Orange, Osceola, Seminole & Volusia County, Florida



# TRUCK AND FREIGHT ALTERNATIVE SITE ANALYSIS PROJECT DEVELOPMENT AND ENVIRONMENT (PD&E) STUDY



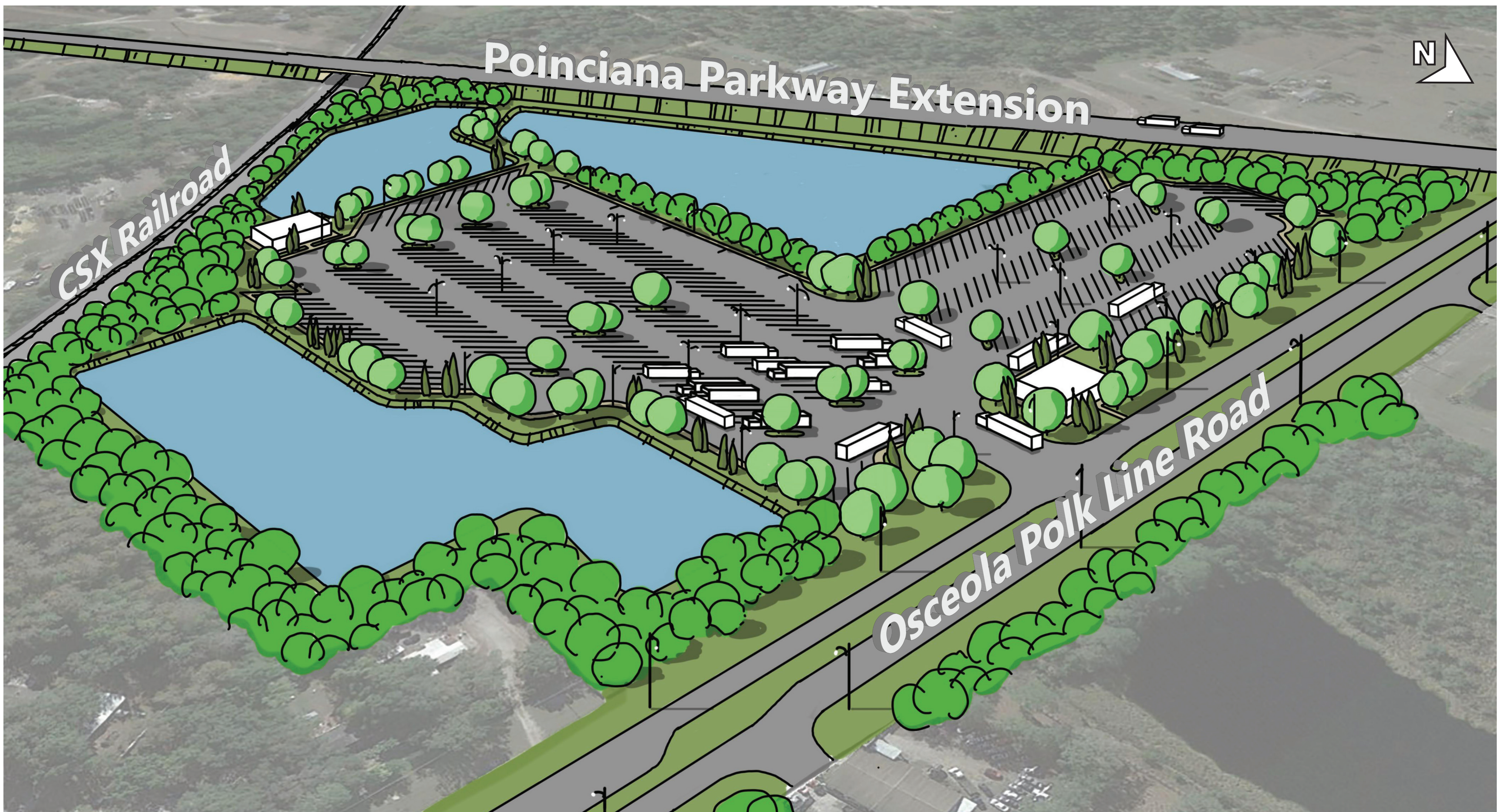
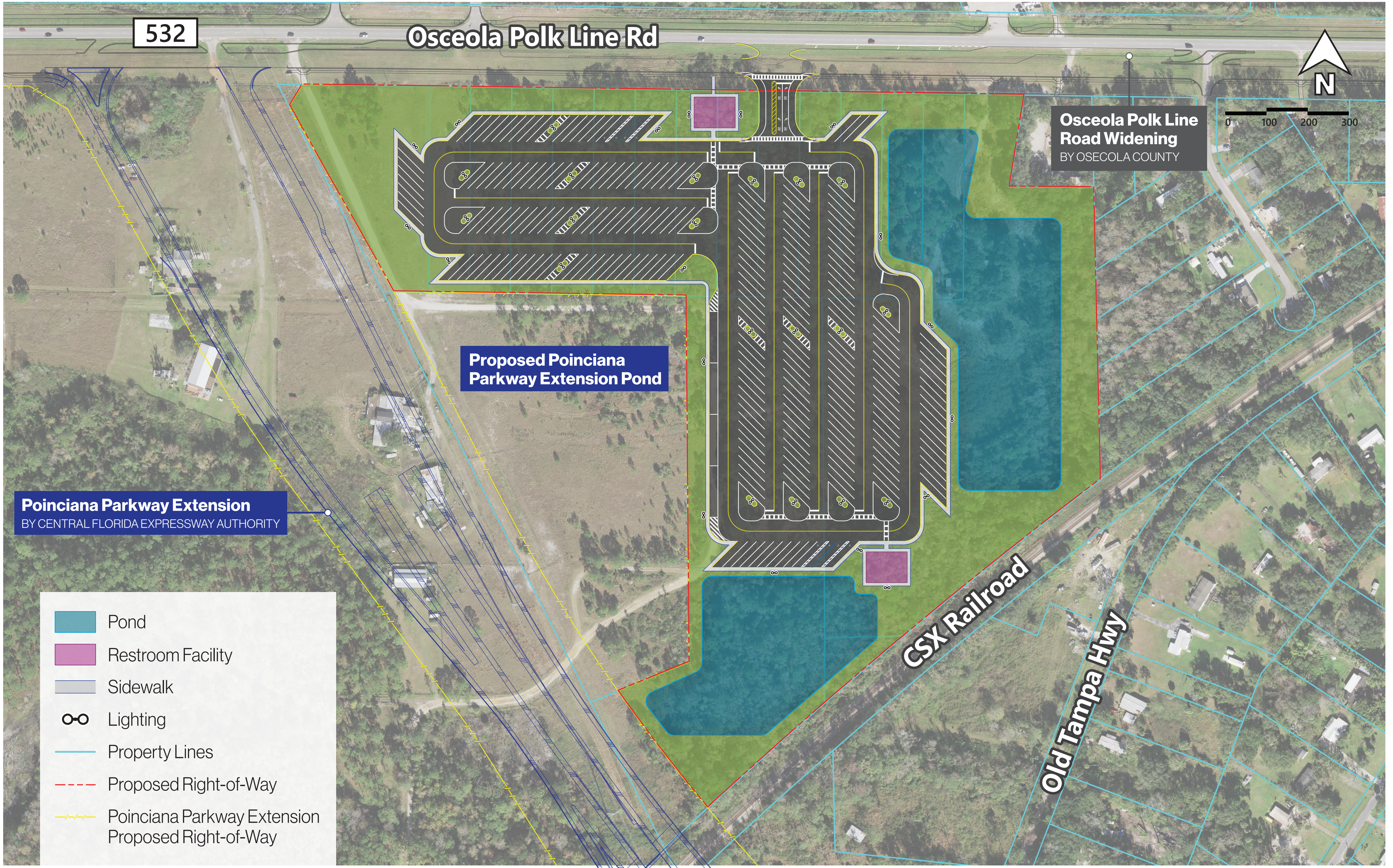
Orange, Osceola, Seminole & Volusia County, Florida

	NO BUILD	SITE 1	SITE 2
			
<b>Evaluation Criteria</b>			
<b>Purpose &amp; Need</b>			
Accommodates Truck Parking Needs	No	Yes	Yes
Number of Truck Parking Spaces	0	257	71
<b>Potential Community Impacts</b>			
Parcels Impacted	0	19	3
Residential Parcels Impacted (occupied/vacant)	0 / 0	0 / 19	0 / 2
Relocations	0	0	0
Right-of-Way Required (acres)	0.0	40.1	24.3
<b>Potential Environmental Impacts</b>			
Wetlands (acres)	0.0	8.5	5.7
Floodplains (acres)	0.0	0.0	0.0
Threatened & Endangered Species	None	High	High
Contamination Sites	None	Moderate	Moderate
Historic/Archaeological Impacts	None	Moderate	Moderate
Noise Sensitive Areas within 500 feet	0	6	9
<b>Estimated Project Cost</b>			
Total Estimated Project Costs*	\$0	\$33.3M	\$21.8M

\*Cost includes Design, Right of Way, and Construction

# TRUCK AND FREIGHT ALTERNATIVE SITE ANALYSIS PROJECT DEVELOPMENT AND ENVIRONMENT (PD&E) STUDY

Orange, Osceola, Seminole & Volusia County, Florida



Approximate Number of Truck Parking Spaces: **257**







**OSCEOLA COUNTY PREFERRED TRUCK PARKING SITE CONCEPT**

# TRUCK AND FREIGHT ALTERNATIVE SITE ANALYSIS PROJECT DEVELOPMENT AND ENVIRONMENT (PD&E) STUDY



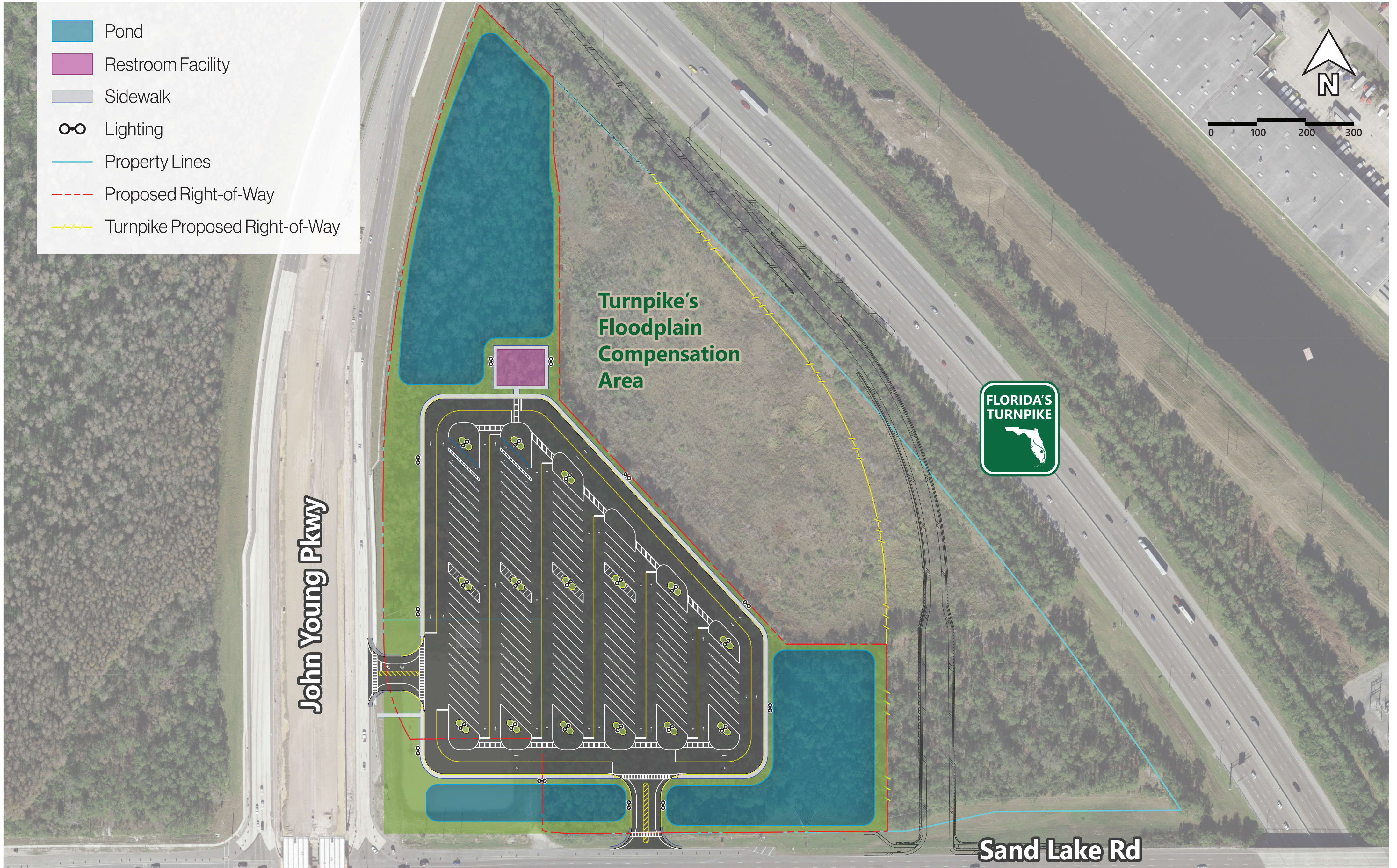
Orange, Osceola, Seminole & Volusia County, Florida

	NO BUILD	SITE 1 	SITE 2 	SITE 3 	SITE 4 	SITE 5 	SITE 6 	SITE 7 
<b>Evaluation Criteria</b>								
<b>Purpose &amp; Need</b>								
Accommodates Truck Parking Needs	No	Yes	Yes	Yes	Yes	Yes	Yes	Yes
Number of Truck Parking Spaces	0	109	59	26	48	114	177	88
<b>Potential Community Impacts</b>								
Parcels Impacted	0	2	1	1	1	2	2	2
Residential Parcels Impacted (occupied/vacant)	0 / 0	0 / 0	0 / 0	0 / 0	0 / 0	0 / 0	0 / 0	0 / 0
Relocations	0	0	0	0	1	0	0	0
Right-of-Way Required (acres)	0.0	21.5	6.8	2.4	4.9	16.3	25.3	12.4
<b>Potential Environmental Impacts</b>								
Wetlands (acres)	0	8.2	0.0	0.0	0.0	1.0	0.2	0.0
Floodplains (acres)	0	21.5	0.0	9.9	4.8	0.0	1.6	0.0
Threatened & Endangered Species	None	Moderate	Low	Low	Low	Moderate	Moderate	Moderate
Contamination Sites	None	Moderate	High	High	High	Moderate	Moderate	Moderate
Historic/Archaeological Impacts	None	Low	Moderate	Low	Low	Moderate	Low	Low
Noise Sensitive Areas within 500 feet	0	0	1	0	0	0	0	0
<b>Estimated Project Cost</b>								
Total Estimated Project Costs*	\$0	\$12.5M	\$19.0M	\$4.6M	\$12.4M	\$28.4M	\$44.0M	\$22.5M

\*Cost includes Design, Right of Way, and Construction

# TRUCK AND FREIGHT ALTERNATIVE SITE ANALYSIS PROJECT DEVELOPMENT AND ENVIRONMENT (PD&E) STUDY

Orange, Osceola, Seminole & Volusia County, Florida



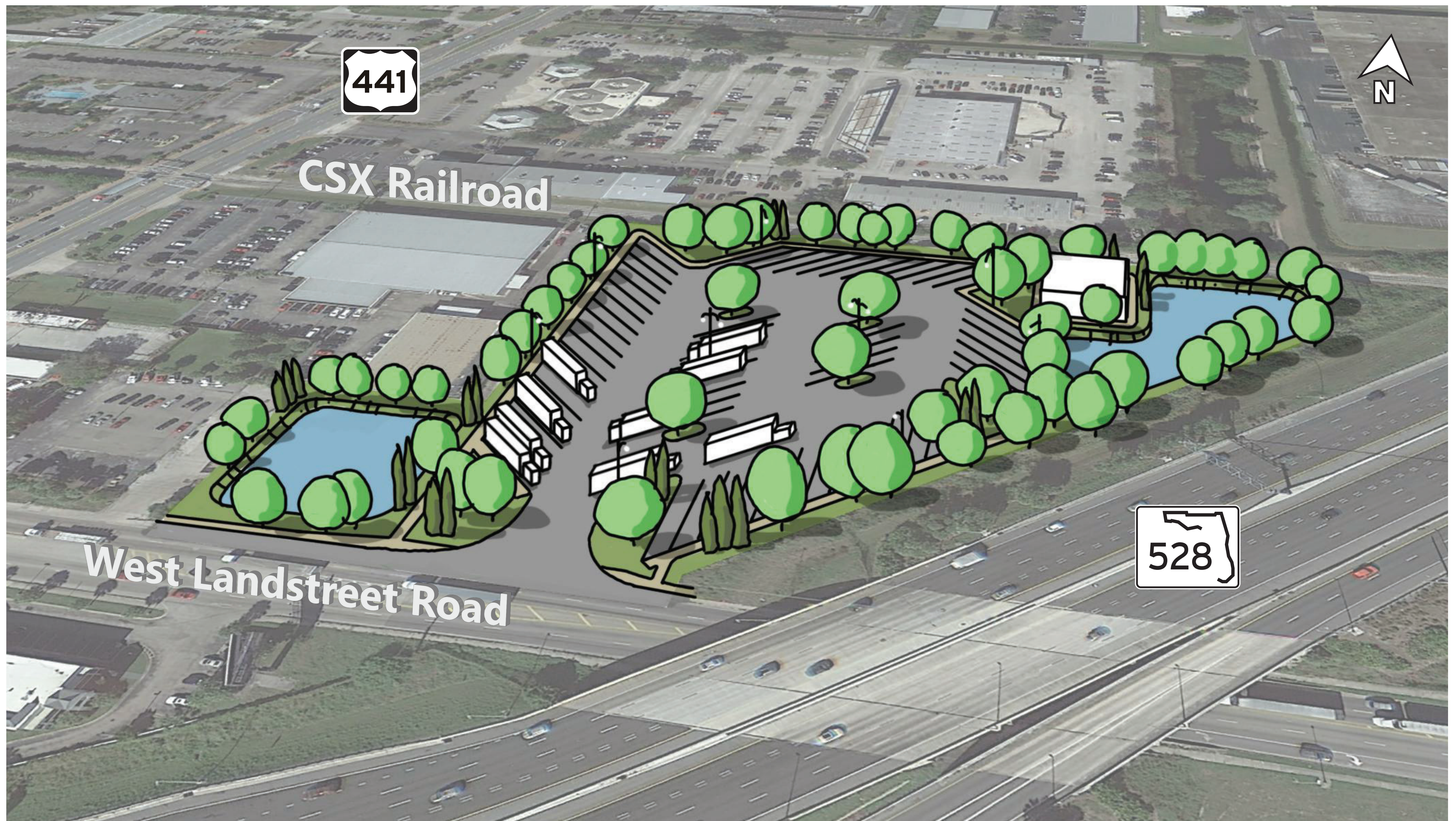
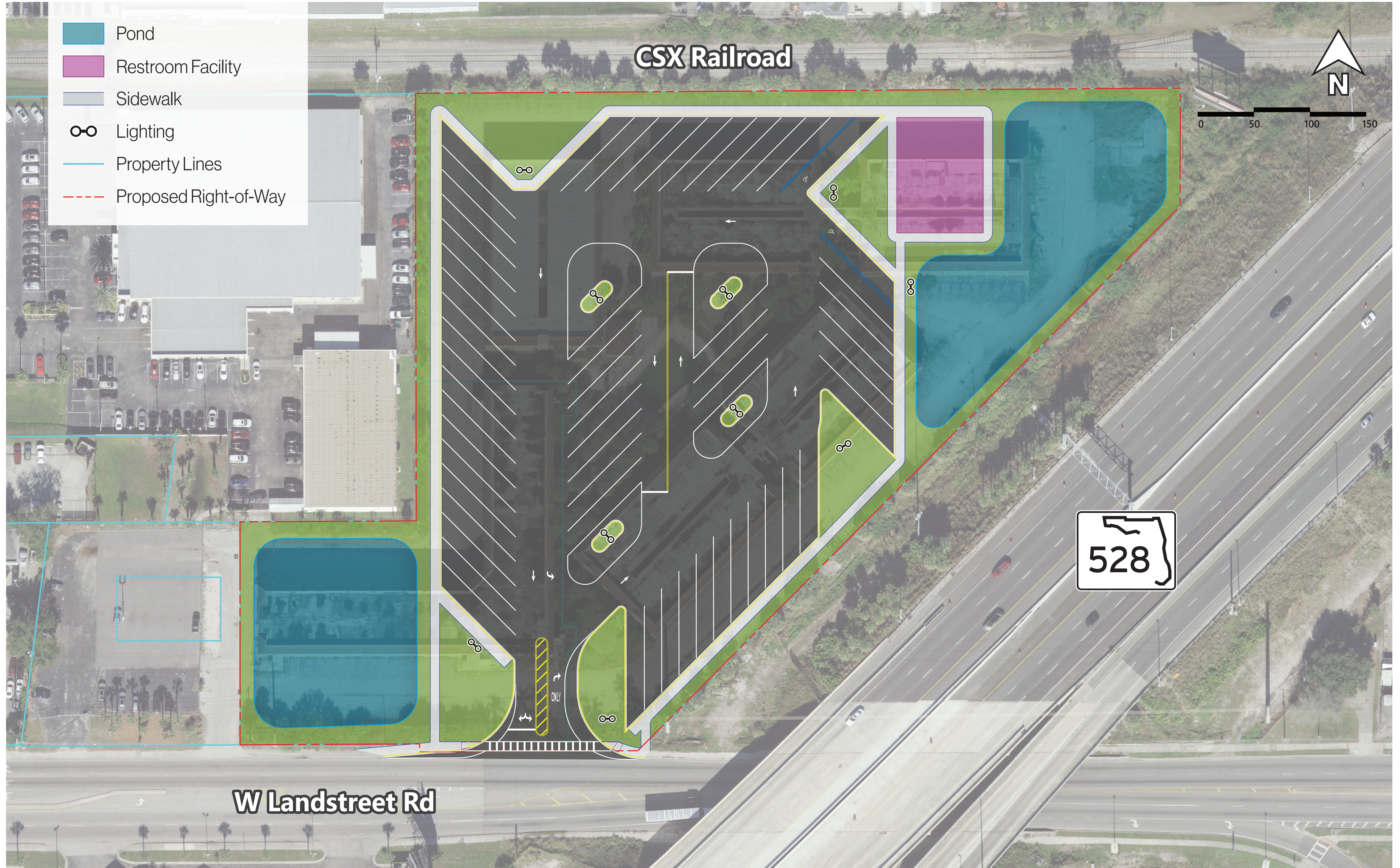
Approximate Number of Truck Parking Spaces: **109**

**ORANGE COUNTY PREFERRED TRUCK PARKING SITE CONCEPT -  
SAND LAKE ROAD AT JOHN YOUNG PARKWAY**



# TRUCK AND FREIGHT ALTERNATIVE SITE ANALYSIS PROJECT DEVELOPMENT AND ENVIRONMENT (PD&E) STUDY

Orange, Osceola, Seminole & Volusia County, Florida



Approximate Number of Truck Parking Spaces: **59**

**ORANGE COUNTY PREFERRED TRUCK PARKING SITE CONCEPT -  
WEST LANDSTREET ROAD, ADJACENT TO STATE ROAD 528**



# TRUCK AND FREIGHT ALTERNATIVE SITE ANALYSIS PROJECT DEVELOPMENT AND ENVIRONMENT (PD&E) STUDY

Orange, Osceola, Seminole & Volusia County, Florida



Approximate Number of Truck Parking Spaces: **48**

**ORANGE COUNTY PREFERRED TRUCK PARKING SITE CONCEPT -  
WEST LANDSTREET ROAD, EAST OF STATE ROAD 528**





# TRUCK AND FREIGHT ALTERNATIVE SITE ANALYSIS PROJECT DEVELOPMENT AND ENVIRONMENT (PD&E) STUDY

Orange, Osceola, Seminole & Volusia County, Florida



	NO BUILD	SITE 1A	SITE 1B
<b>Evaluation Criteria</b>			
<b>Purpose &amp; Need</b>			
Accommodates Truck Parking Needs	No	Yes	Yes
Number of Truck Parking Spaces	0	219	157
<b>Potential Community Impacts</b>			
Parcels Impacted	0	25	9
Residential Parcels Impacted (occupied/vacant)	0 / 0	5 / 2	2 / 1
Relocations	0	8	4
Right-of-Way Required (acres)	0.0	26.0	18.3
<b>Potential Environmental Impacts</b>			
Wetlands (acres)	0.0	4.8	4.4
Floodplains (acres)	0.0	0.0	0.0
Threatened & Endangered Species	None	Moderate	Moderate
Contamination Sites	None	Moderate	Moderate
Historic/Archaeological Impacts	None	Moderate	Moderate
Noise Sensitive Areas within 500 feet	0	7	4
<b>Estimated Project Cost</b>			
Total Estimated Project Costs*	\$0	\$54.3M	\$25.6M

\*Cost includes Design, Right of Way, and Construction

# TRUCK AND FREIGHT ALTERNATIVE SITE ANALYSIS PROJECT DEVELOPMENT AND ENVIRONMENT (PD&E) STUDY

Orange, Osceola, Seminole & Volusia County, Florida



Approximate Number of Truck Parking Spaces: **166**



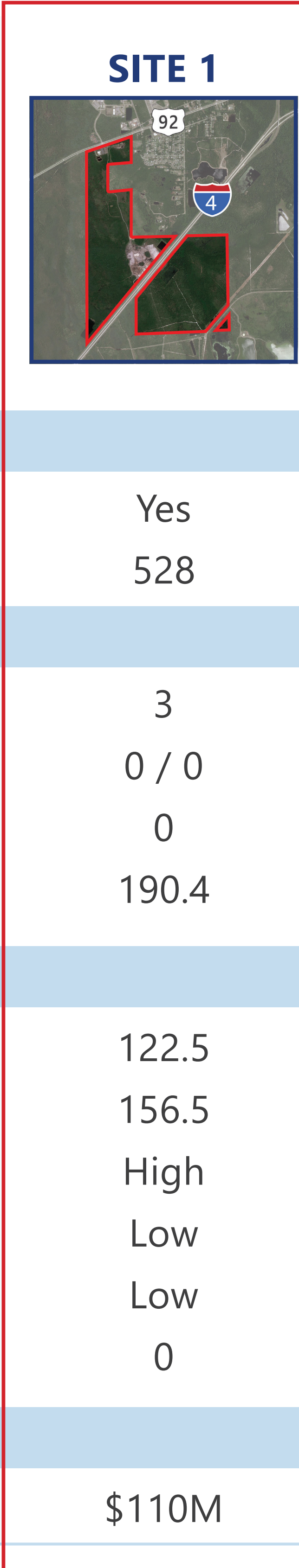
## SEMINOLE COUNTY PREFERRED TRUCK PARKING SITE CONCEPT

# TRUCK AND FREIGHT ALTERNATIVE SITE ANALYSIS PROJECT DEVELOPMENT AND ENVIRONMENT (PD&E) STUDY

Orange, Osceola, Seminole & Volusia County, Florida



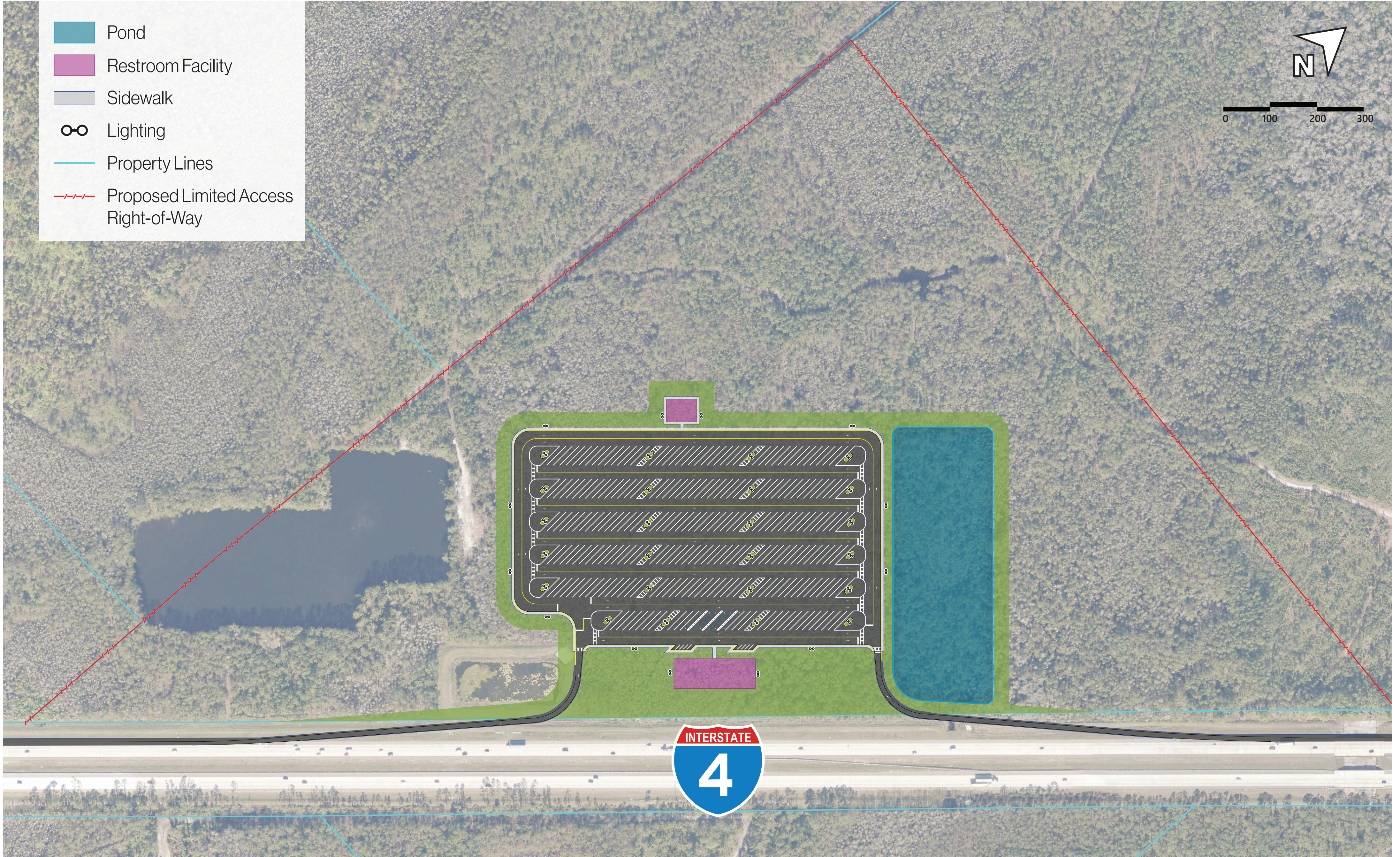
	NO BUILD	SITE 1
<b>Evaluation Criteria</b>		
<b>Purpose &amp; Need</b>		
Accommodates Truck Parking Needs	No	Yes
Number of Truck Parking Spaces	0	528
<b>Potential Community Impacts</b>		
Parcels Impacted	0	3
Residential Parcels Impacted (occupied/vacant)	0 / 0	0 / 0
Relocations	0	0
Right-of-Way Required (acres)	0.0	190.4
<b>Potential Environmental Impacts</b>		
Wetlands (acres)	0.0	122.5
Floodplains (acres)	0.0	156.5
Threatened & Endangered Species	None	High
Contamination Sites	None	Low
Historic/Archaeological Impacts	None	Low
Noise Sensitive Areas within 500 feet	0	0
<b>Estimated Project Cost</b>		
Total Estimated Project Costs*	\$0	\$110M



\*Cost includes Design, Right of Way, and Construction

# TRUCK AND FREIGHT ALTERNATIVE SITE ANALYSIS PROJECT DEVELOPMENT AND ENVIRONMENT (PD&E) STUDY

Orange, Osceola, Seminole & Volusia County, Florida



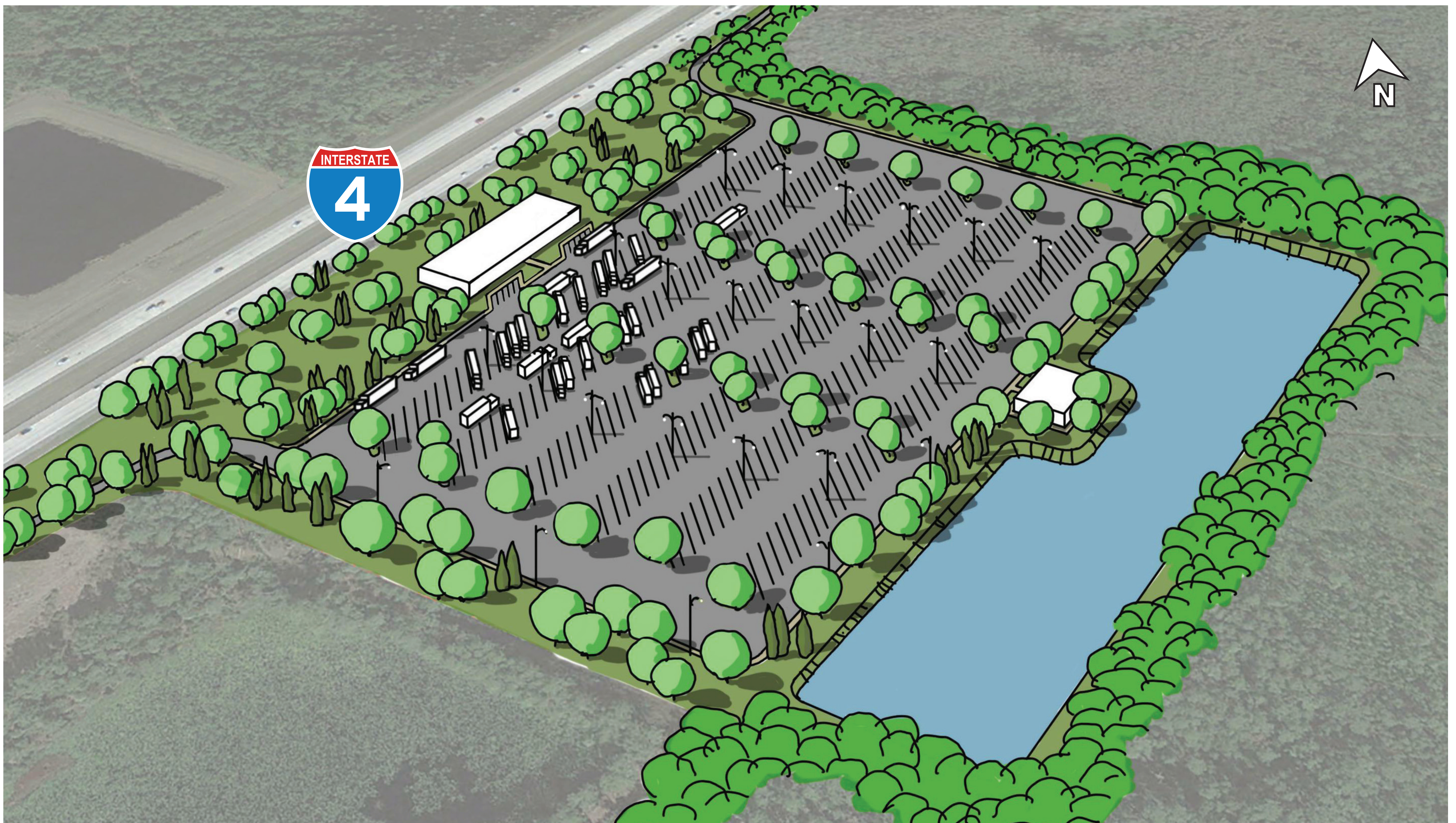
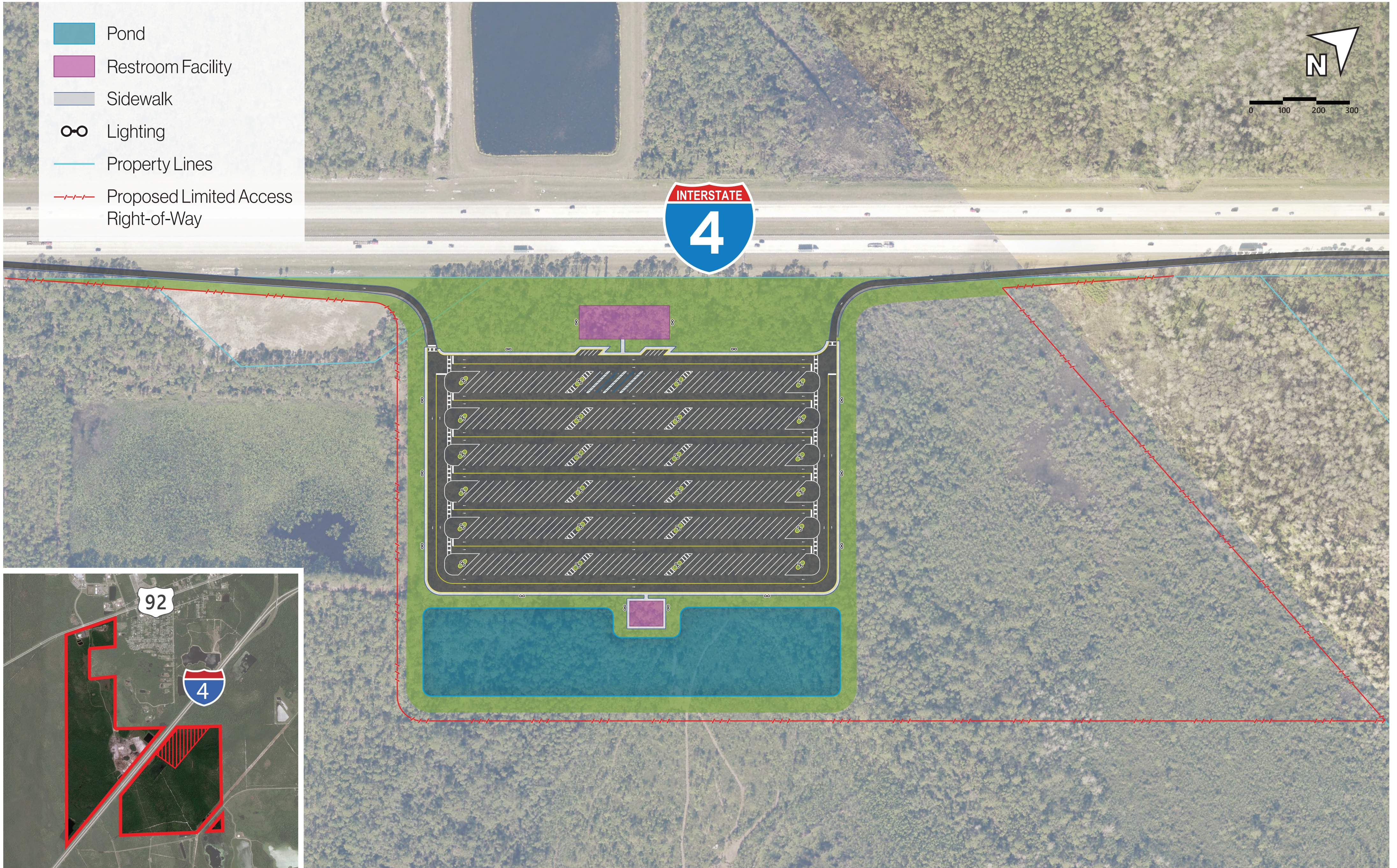
Approximate Number of Truck Parking Spaces: **253**

**VOLUSIA COUNTY PREFERRED TRUCK PARKING SITE CONCEPT - WESTBOUND**



# TRUCK AND FREIGHT ALTERNATIVE SITE ANALYSIS PROJECT DEVELOPMENT AND ENVIRONMENT (PD&E) STUDY

Orange, Osceola, Seminole & Volusia County, Florida



Approximate Number of Truck Parking Spaces: **275**

**VOLUSIA COUNTY PREFERRED TRUCK PARKING SITE CONCEPT - EASTBOUND**

