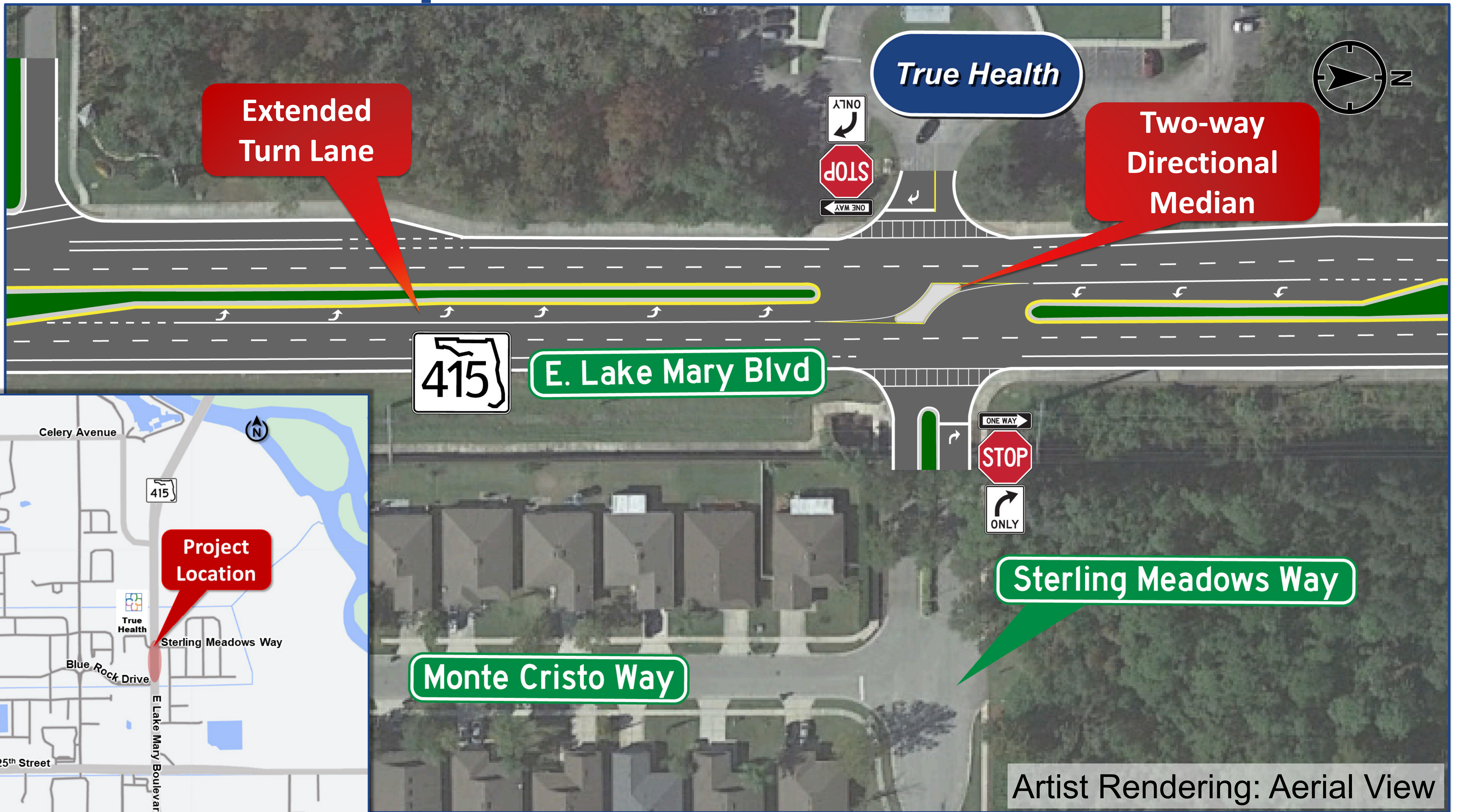


Aerial View: Proposed Directional Median



East Lake Mary Boulevard (S.R. 415) at Sterling Meadows Way Safety Improvements

Financial Project Identification (FPID) No.: 992400-2



Street View from True Health



**East Lake Mary Boulevard (S.R. 415) at
Sterling Meadows Way Safety Improvements**

Financial Project Identification (FPID) No.: 992400-2





Google Earth

East Lake Mary Boulevard (S.R. 415) at Sterling Meadows Way Safety Improvements

Financial Project Identification (FPID) No.: 992400-2

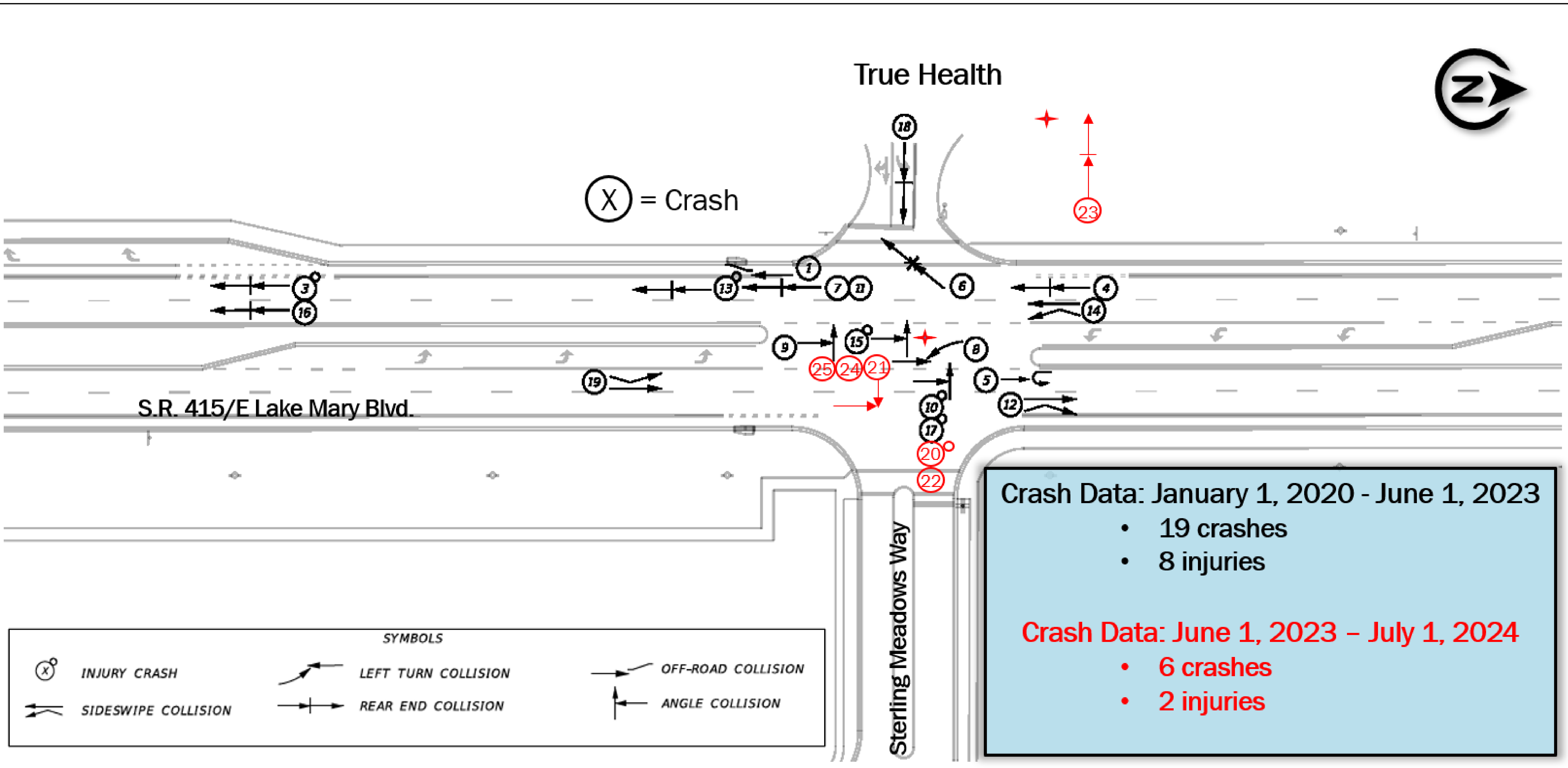


Crash Analysis



True Health

(X) = Crash



Crash Data: January 1, 2020 - June 1, 2023

- 19 crashes
- 8 injuries

Crash Data: June 1, 2023 - July 1, 2024

- 6 crashes
- 2 injuries

East Lake Mary Boulevard (S.R. 415) at Sterling Meadows Way Safety Improvements

Financial Project Identification (FPID) No.: 992400-2



Signal Warrant Analysis Data

Time Interval Hours	Vehicles Per Hour		
	2019	2023	2024
7-8 a.m.	68	66	72
8-9 a.m.	62	46	39
11 a.m.-12 p.m.	30	36	38
12-1 p.m.	26	27	28
2-3 p.m.	28	36	36
3-4 p.m.	25	26	39
4-5 p.m.	46	39	33
5-6 p.m.	37	37	48

Signal Requirement Minimum Threshold = 60 vehicles/hour (busiest 4 hours)

East Lake Mary Boulevard (S.R. 415) at Sterling Meadows Way Safety Improvements

